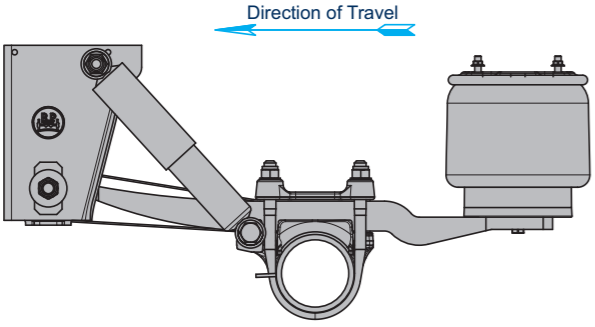
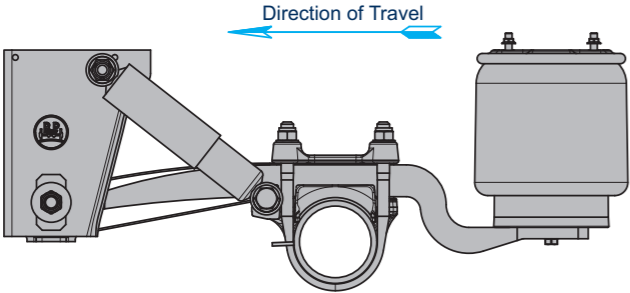




Series	Air suspension axles and suspensions	Axle load	Air Bag		Axle type with disc brake		Ride height FH (mm)	to drawing	
			30/30K	36/36K	TS2 3709	TS2 4309		TS2 3709	TS2 4309
ALO	 Air suspension axles	9t	x	-	SKRSF... SKRBF...	SRSF... SRBF...	390-565	Sheet 1	Sheet 1a
		9t	-	x				Sheet 2	Sheet 2a
	Two-sided lifting device	9t						Sheet 7a	
ALM / ALMT	 Air suspension axles	9t	x	-	SKRBF... SKRSF...	SRBF... SRSF...	245 - 420	Sheet 8	Sheet 8a
		9t	-	x				Sheet 9	Sheet 9a
	Two-sided lifting device	9t						Sheet 14a	

Rev. 1 (3) 01.06.2021
Subject to change without notice.



Weight variations are within the permitted DIN tolerances for the production process, given in kg.

Series	Suspensions to drawing	Line	Weight of air suspension parts	Weight of clamped axle mounting	FM 1300		FM 1400					
					SP 2040 Et 0	SP 2040 ET 120	SP 2040 ET 0	SP 2040 ET 120	SP 2100 ET 0	SP 2095 ET 120	SP 2140 ET 0	SP 2140 ET 120
ALO	Sheet 1	1	93 ⁴⁾	32	267.2 ⁴⁾ (Ø146 x 10)	275,2 ⁴⁾ (Ø146 x 10)	267.2 ⁴⁾ (Ø146 x 10)	275,2 ⁴⁾ (Ø146 x 10)	269.2 ⁴⁾ (Ø146 x 10)	278,1 ⁴⁾ (Ø146 x 10)	270,5 ⁴⁾ (Ø146 x 10)	279,6 ⁴⁾ (Ø146 x 10)
		2	98 ⁴⁾									
		3	101 ⁴⁾									
		4	112 ⁴⁾									
	Sheet 2	1	100 ⁴⁾	32	267.2 ⁴⁾ (Ø146 x 10)	275,2 ⁴⁾ (Ø146 x 10)	267.2 ⁴⁾ (Ø146 x 10)	275,2 ⁴⁾ (Ø146 x 10)	269.2 ⁴⁾ (Ø146 x 10)	278,1 ⁴⁾ (Ø146 x 10)	270,5 ⁴⁾ (Ø146 x 10)	279,6 ⁴⁾ (Ø146 x 10)
		2	105 ⁴⁾									
		3	108 ⁴⁾									
		4	119 ⁴⁾									
ALM / ALMT	Sheet 8	1	98	32	267.2 ⁴⁾ (Ø146 x 10)	275,2 ⁴⁾ (Ø146 x 10)	267.2 ⁴⁾ (Ø146 x 10)	275,2 ⁴⁾ (Ø146 x 10)	269.2 ⁴⁾ (Ø146 x 10)	278,1 ⁴⁾ (Ø146 x 10)	270,5 ⁴⁾ (Ø146 x 10)	279,6 ⁴⁾ (Ø146 x 10)
		2	100									
		3	106									
		4	98 ⁴⁾									
		5	108									
		6	104 ⁴⁾									
		7	106 ⁴⁾									
	Sheet 9	1	104	32	267.2 (Ø146 x 10)	275,2 (Ø146 x 10)	267.2 (Ø146 x 10)	275,2 (Ø146 x 10)	269.2 (Ø146 x 10)	278,1 (Ø146 x 10)	270,5 (Ø146 x 10)	279,6 (Ø146 x 10)
		2	107									
		3	113									
		4	105									
		5	116									
		6	110									
		7	113									
Lift	Sheet 7a, 14a		Two-sided lifting device Version with hanger bracket (9 t)						34 kg			
			Two-sided lifting device Version with channel cross member (9 t)						33 kg			

Note on weight specifications

- > Trailing arm length L2 bei ALO = 310 mm
- > Trailing arm length L2 bei ALM/ALMT = 380 mm
- > With respect to the strength of the trailing arm, the centre-of-mass heights stipulated on AL II pages III must be observed
- > With air bag BPW 30 / 30K offset V = 20 mm
- > With offset V = 60 mm look at additional weight, except LightTube

Less weight per axle

- > with LightTube = 14 kg
- > with LightTube and air bag BPW 30 with V=60 = 20,2 kg
- > with LightTube and air bag BPW 30K with V=60 = 18,8 kg
- > with LightTube and air bag BPW 36 with V=80 = 12,2 kg
- > with LightTube and air bag BPW 36K with V=80 = 11,6 kg

Additional weight per axle

- > Bolt-on bracket = 8 kg
- > Dust cover = 2,2 kg
- > Air bag BPW 30 with offset V = 60 = 4,2 kg, except LightTube
- > Air bag BPW 30K with offset V = 60 = 3,7 kg, except LightTube

Series	Trailing arm			Additional weight per axle
	L1	L2	Thickness	
ALO	500	380	1 x 56	4 kg
			1 x 62	9.4 kg
310		1 x 62	2.4 kg	
		ALM	380	1 x 62
ALMT	1 x 62			3.9 kg

Determining the total weight

Air suspension parts
+ Axle mounting
+ Axle
+ Additional weight / - Underweight
= Total weight

⁴⁾ LightTube possible



Weight variations are within the permitted DIN tolerances for the production process, given in kg.

Series	Suspensions to drawing	Line	Weight of air suspension parts	Weight of clamped axle mounting	FM 1200		FM 1300				FM 1400	
					SP 2040 ET 0	SP 2040 ET 120	SP 2040 ET 0	SP 2040 ET 120	SP 2100 ET 0	SP 2095 ET 120	SP 2140 ET 0	SP 2140 ET 120
ALO	Sheet 1a	1	93 ⁴⁾	32	280,8 ⁴⁾ (Ø146 x 10)	289,2 ⁴⁾ (Ø146 x 10)	280,8 ⁴⁾ (Ø146 x 10)	289,2 ⁴⁾ (Ø146 x 10)	282,8 ⁴⁾ (Ø146 x 10)	291,1 ⁴⁾ (Ø146 x 10)	284,1 ⁴⁾ (Ø146 x 10)	292,6 ⁴⁾ (Ø146 x 10)
		2	99 ⁴⁾									
		3	101 ⁴⁾									
		4	112 ⁴⁾									
	Sheet 2a	1	100 ⁴⁾	32	280,8 ⁴⁾ (Ø146 x 10)	289,2 ⁴⁾ (Ø146 x 10)	280,8 ⁴⁾ (Ø146 x 10)	289,2 ⁴⁾ (Ø146 x 10)	282,8 ⁴⁾ (Ø146 x 10)	291,1 ⁴⁾ (Ø146 x 10)	284,1 ⁴⁾ (Ø146 x 10)	292,6 ⁴⁾ (Ø146 x 10)
		2	105 ⁴⁾									
		3	108 ⁴⁾									
		4	119 ⁴⁾									
ALM / ALMT	Sheet 8a	1	98	32	280,8 ⁴⁾ (Ø146 x 10)	289,2 ⁴⁾ (Ø146 x 10)	280,8 ⁴⁾ (Ø146 x 10)	289,2 ⁴⁾ (Ø146 x 10)	282,8 ⁴⁾ (Ø146 x 10)	291,1 ⁴⁾ (Ø146 x 10)	284,1 ⁴⁾ (Ø146 x 10)	292,6 ⁴⁾ (Ø146 x 10)
		2	100									
		3	106									
		4	98 ⁴⁾									
		5	108									
		6	104 ⁴⁾									
		7	106 ⁴⁾									
	Sheet 9a	1	104	32	280,8 (Ø146 x 10)	289,2 (Ø146 x 10)	280,8 (Ø146 x 10)	289,2 (Ø146 x 10)	282,8 (Ø146 x 10)	291,1 (Ø146 x 10)	284,1 (Ø146 x 10)	292,6 (Ø146 x 10)
		2	107									
		3	113									
		4	105									
		5	116									
		6	110									
		7	113									
Lift	Sheet 7a, 14a	Two-sided lifting device Version with hanger bracket (9t)								34 kg		
		Two-sided lifting device Version with channel cross member (9t)								33 kg		

Note on weight specifications

- Trailing arm length L2 bei ALO = 310 mm
- Trailing arm length L2 bei ALM/ALMT = 380 mm
- With respect to the strength of the trailing arm, the centre-of-mass heights stipulated on AL II pages III must be observed
- With air bag BPW 30 / 30K offset V = 20 mm
- With offset V = 60 mm look at additional weight, except LightTube

Less weight per axle

- with LightTube = 14 kg
- with LightTube and air bag BPW 30 with V=60 = 20,2 kg
- with LightTube and air bag BPW 30K with V=60 = 18,8 kg
- with LightTube and air bag BPW 36 with V=80 = 12,2 kg
- with LightTube and air bag BPW 36K with V=80 = 11,6 kg

Additional weight per axle

- Bolt-on bracket = 8 kg
- Dust cover = 2.2 kg
- Air bag BPW 30 with offset V = 60 = 4.2 kg, except LightTube
- Air bag BPW 30K with offset V = 60 = 3.7 kg, except LightTube

Series	Trailing arm			Additional weight per axle
	L1	L2	thickness	
ALO	500	380	1 x 56	4.0 kg
			1 x 62	9.4 kg
310		1 x 62	2.4 kg	
		380	1 x 62	5.6 kg
ALM				
ALMT			1 x 62	3.9 kg

Determining the total weight

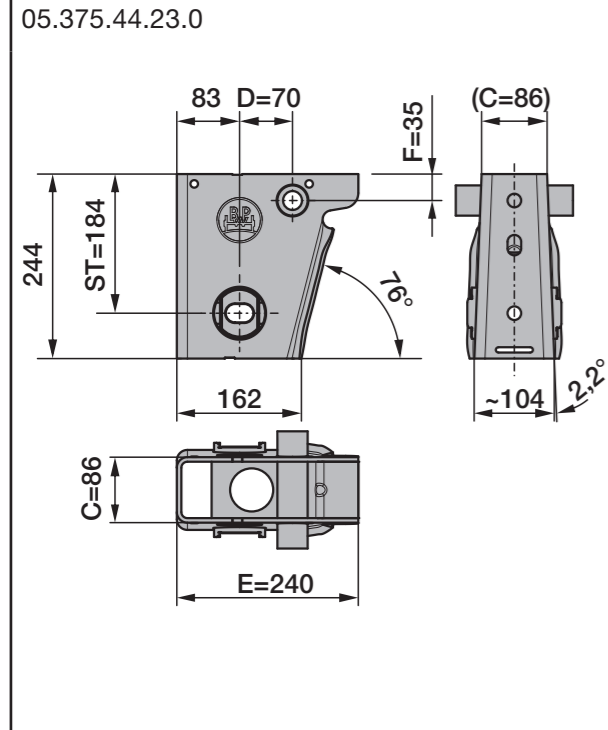
Air suspension parts
+ Axle mounting
+ Axle
+ Additional weight / - Underweight
= Total weight

⁴⁾ LightTube possible



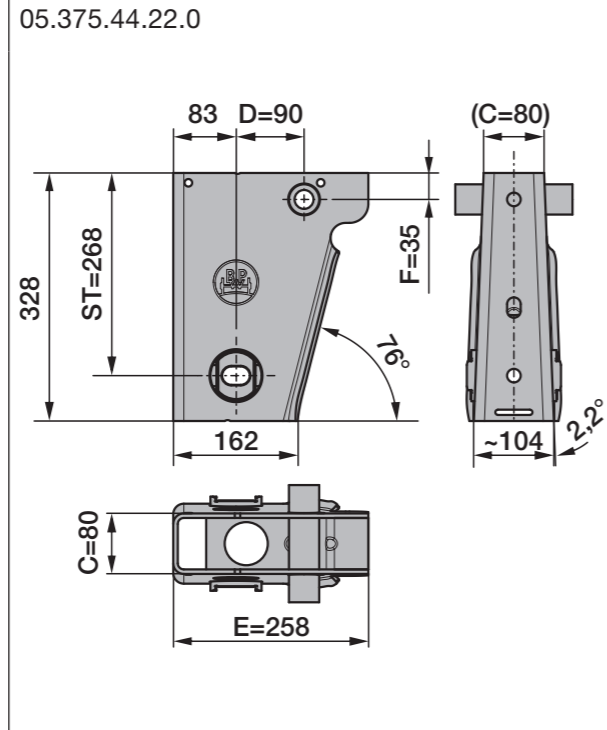
**Standard brackets AL II
for single leaf trailing arms**

Spring bolt assembly: 05.857.00.28.0



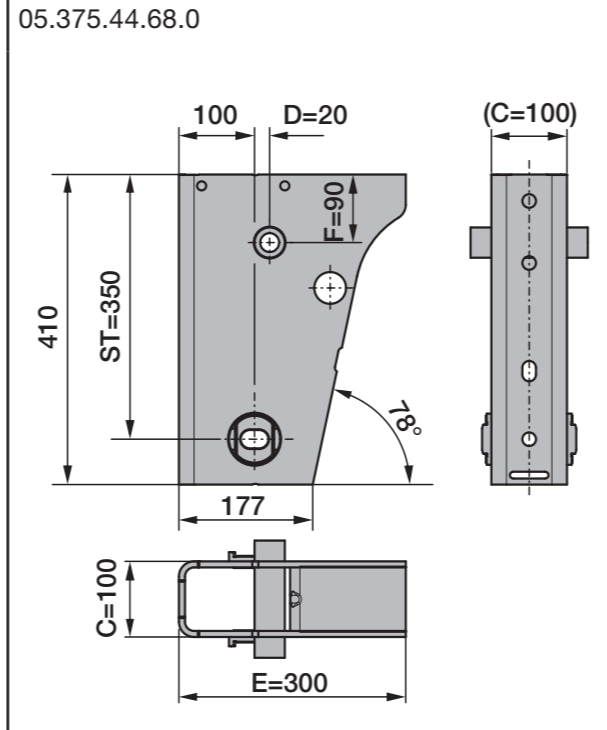
**Standard brackets AL II
for single leaf trailing arms and double leaf trailing arms**

Spring bolt assembly: 05.857.00.29.0



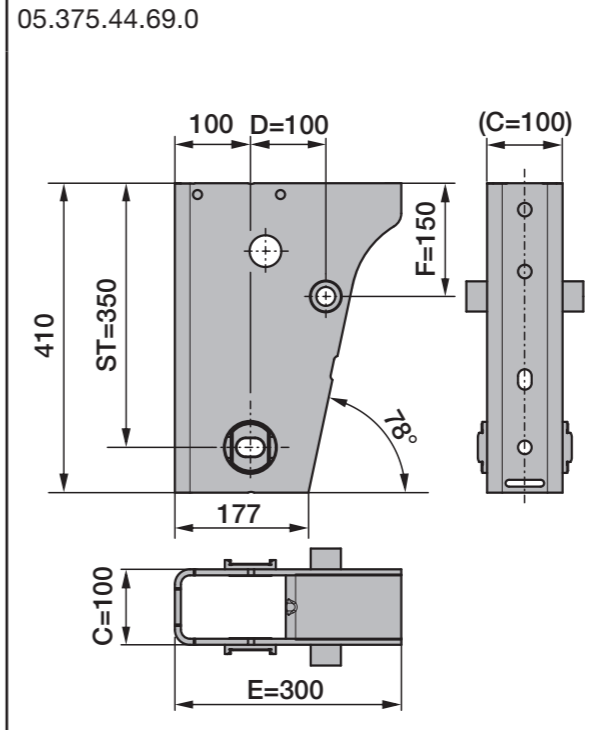
**Standard brackets AL II
for single leaf trailing arms and double leaf trailing arms**

Spring bolt assembly: 05.857.00.29.0



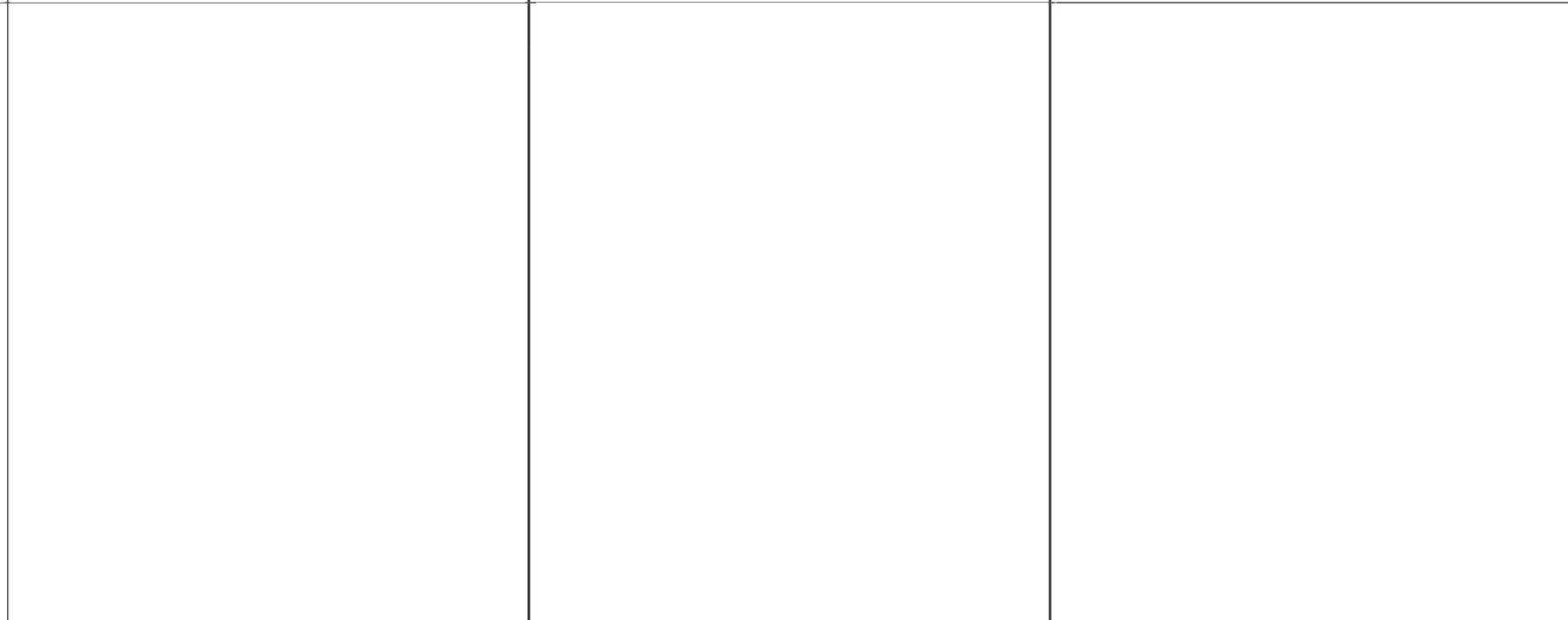
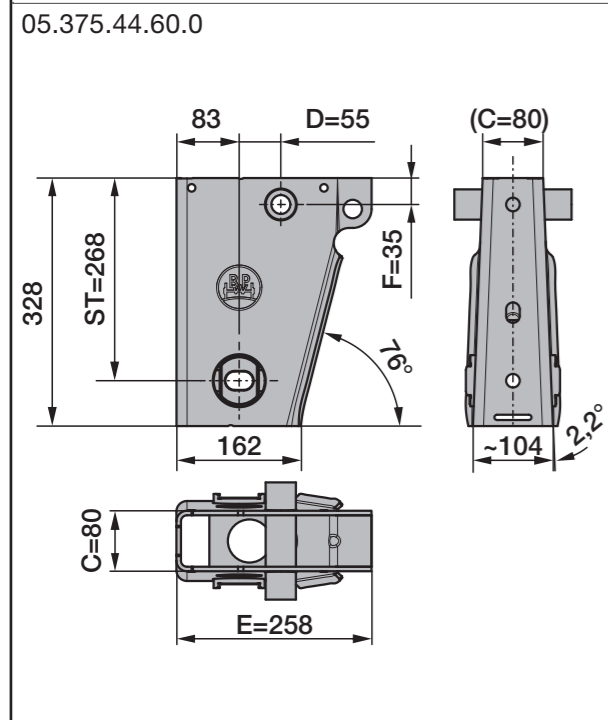
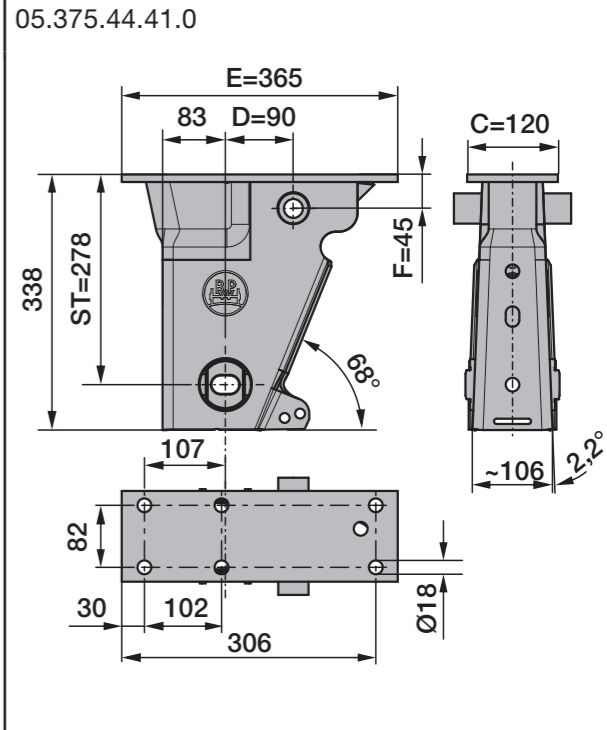
**Bolt-on bracket AL II
for single leaf trailing arms
(max. 9 t)**

Spring bolt assembly: 05.857.00.29.0



**Bolt-on bracket AL II
for single leaf trailing arms
(max. 9 t)**

Spring bolt assembly: 05.857.00.29.0

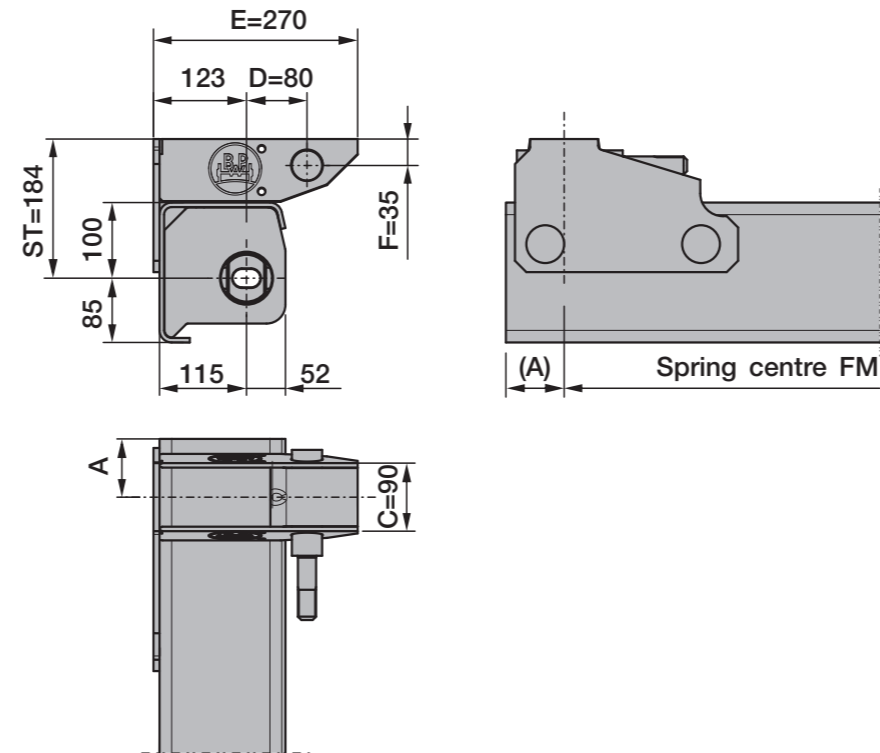
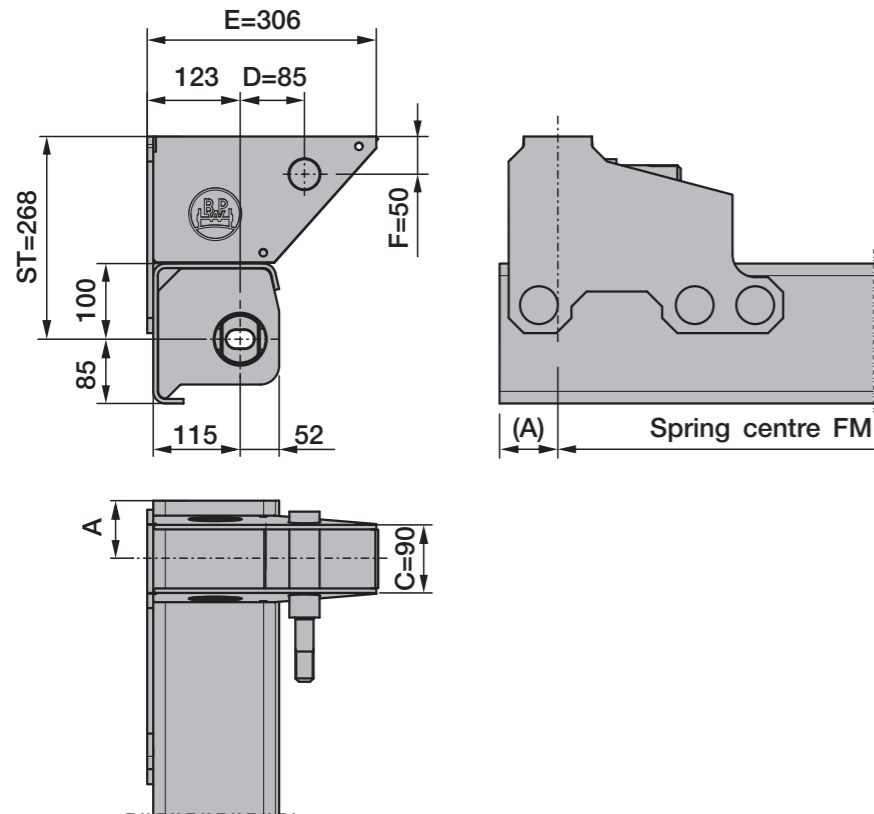


Note:
The hanger brackets and the frame must be reinforced so that the forces applied can be absorbed (see the current BPW installation instructions).

Note:
Lifting device for bolt-on bracket on demand.



Spring bolt assembly: 05.857.00.29.0



For spring centre FM			
	1200	1300	1400
Measure A	77	77	77

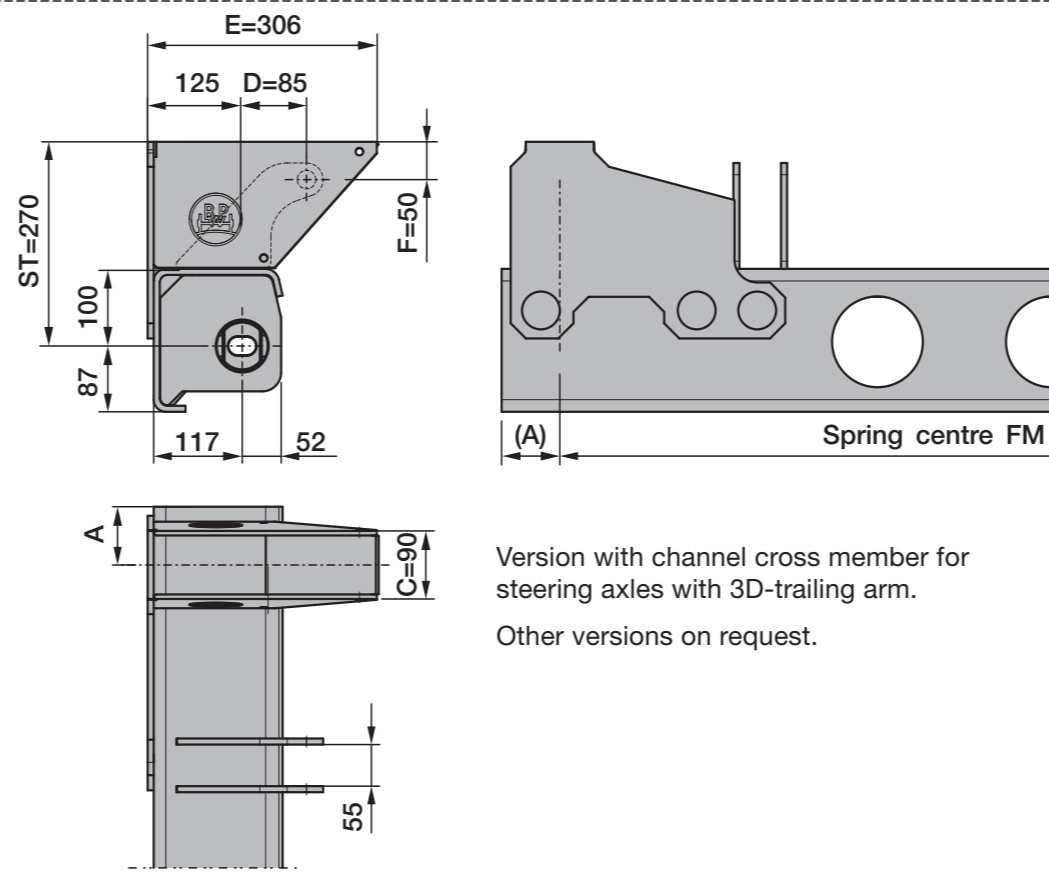
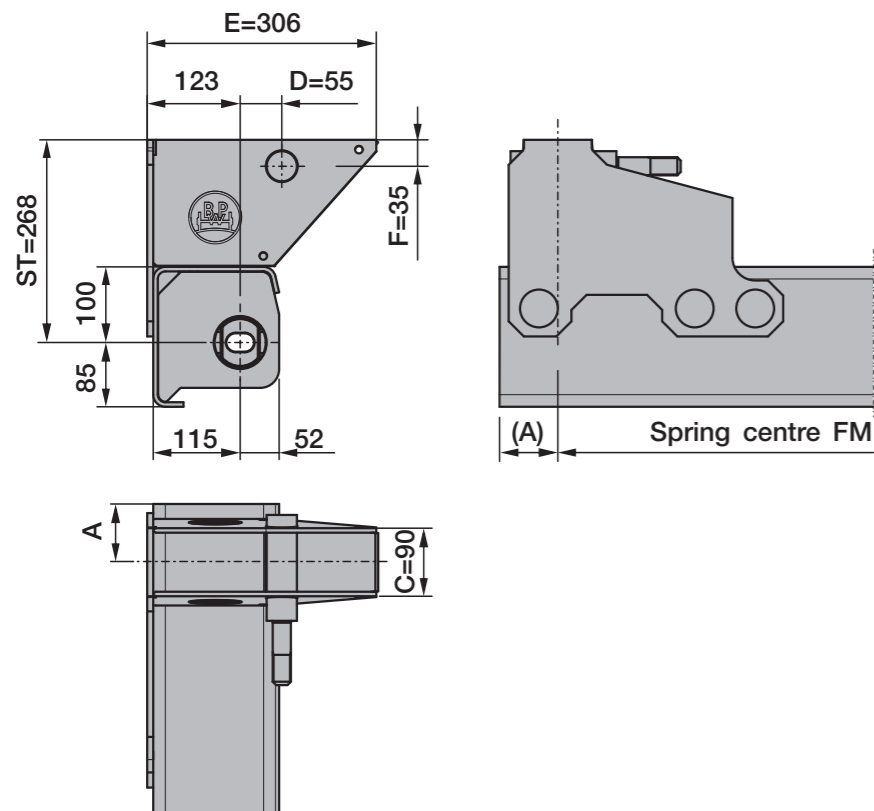
Note:

The frame must be reinforced so that the forces applied can be absorbed.

See the current BPW installation instructions.

For example:

Air spring axle with channel cross member
SKRSFALO C V30 -> version with channel cross member



Rev. 1	(3)	01.06.2021
Subject to change without notice.		



Series	to drawing AL II - TS2.0-R	Trailing arm				Axle load kg	Height of centre of gravity max.							
		05.082..	Thickness	L1	L2		Spring centre FM							
						1200	1300	1400						
ALO	Sheet 1 Sheet 1a Sheet 2 Sheet 2a	..13.90.2	1 x 56 1 x 61 ⁴⁾	500	310	8000	2800	3000	3200					
		..14.57.2 ⁴⁾				9000	2500	2700	2850					
		..13.89.2				8000	2800	3000	3200					
		..14.56.2 ⁴⁾				9000	2500	2700	2850					
		..14.02.2	1 x 62		310	8000	---	---	---					
		..13.96.2				9000	---	---	---					
		ALM / ALMT				Sheet 8 Sheet 8a Sheet 9 Sheet 9a	..13.88.2 ¹⁾	1 x 56 1 x 61 ³⁾	500	380	8000	2800	3000	3200
							..14.09.2 ²⁾				9000	2500	2700	2850
..14.55.2 ³⁾	8000		---	---	---									
..13.95.2 ¹⁾	1 x 62		9000	---	---		---							
..14.12.2 ²⁾		---	---	---	---									

1) Series ALM

2) Series ALMT

3) LightTube ALM

4) LightTube ALO



Advice	Conditions	Axle load	Air suspension series	Tyre S = Single tyres Z = Twin tyres	Spring centre	Trailing arm		Axle beam	Axle connection	Notes and options
						70 mm	100 mm			
1	On-Road use	9 t	ECO Air (EA)	S	≥ 1200	Guide link		○ 146 x 10	Clamped	Lines 1 - 3 and 7 - 9 Vehicles with split air bag (combi-airbag) must not be moved in the unvented condition when manoeuvring in traffic. Lines 1 - 11 For container and coil carrier trailers, the use of air bag stroke limitation is necessary. Tipper trailers require the use of a lowering device or stroke limitation. Lines 7 - 11 Optional use of HD components for sophisticated applications - HD shock absorbers for rough road usage and for high off-road speeds - Ø 360 mm air bag (for fast height adjustment with sudden loading) with reinforced bag plate Lines 9 - 11 Toughest off-road use, e.g. mining operations or use on unconsolidated, heavy substrates, which are navigable only with all-wheel drive machines. Mandatory use of air bags with reinforced bag plate.
2			AL II			1 x 56 *	○ 146 x 10 ¹⁾ □ 120 x 10 ²⁾			
3						Z		< 1200		
4		S / Z		≥ 1100	□ 120 x 15					
5		10 t	Z	< 1100		1 x 65	Welded			
6			11.8 t with SN 4220 12 t with SN 3020 / SN 3620	S / Z				□ 120 x 17		
7	Off-Road use	9 t	ECO Air (EA)	S	≥ 1200	Guide link		○ 146 x 10	Clamped	
8			AL II			1 x 62	○ 146 x 10 ¹⁾ □ 120 x 15 ²⁾			
9						Z		< 1200		
10		10 t	S / Z		□ 120 x 17					
11		10 t - 12 t	SL			1 x 57 / 2 x 43	□ 150 x 16			

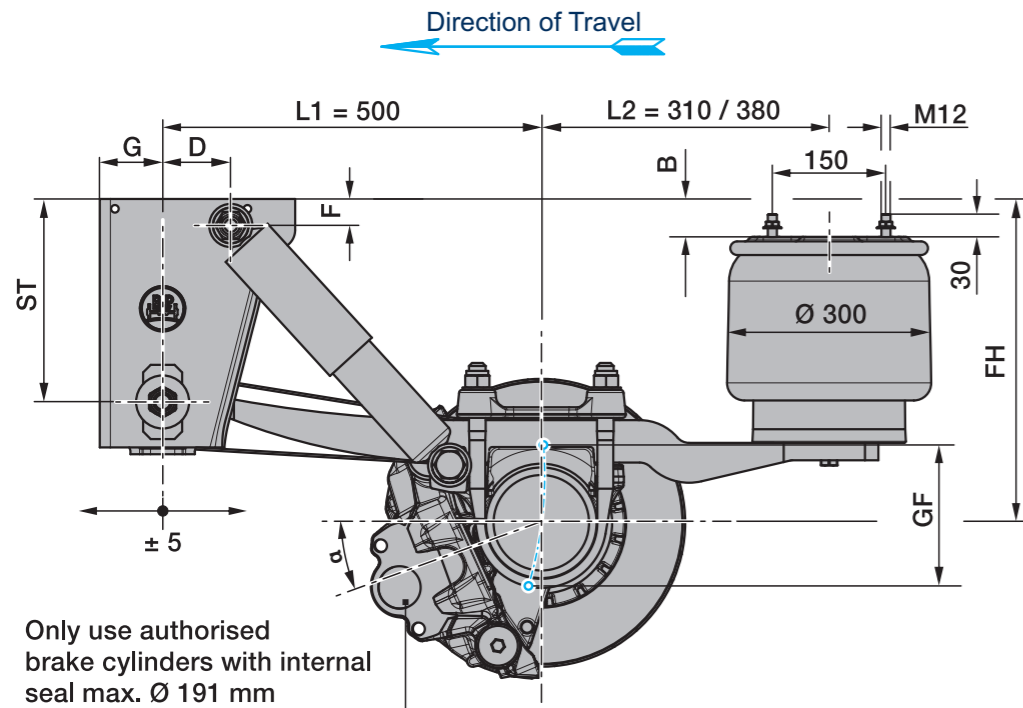
* LightTube available for ALO, ALM, ALU

¹⁾ ALO / ALM / ALMT

²⁾ ALU

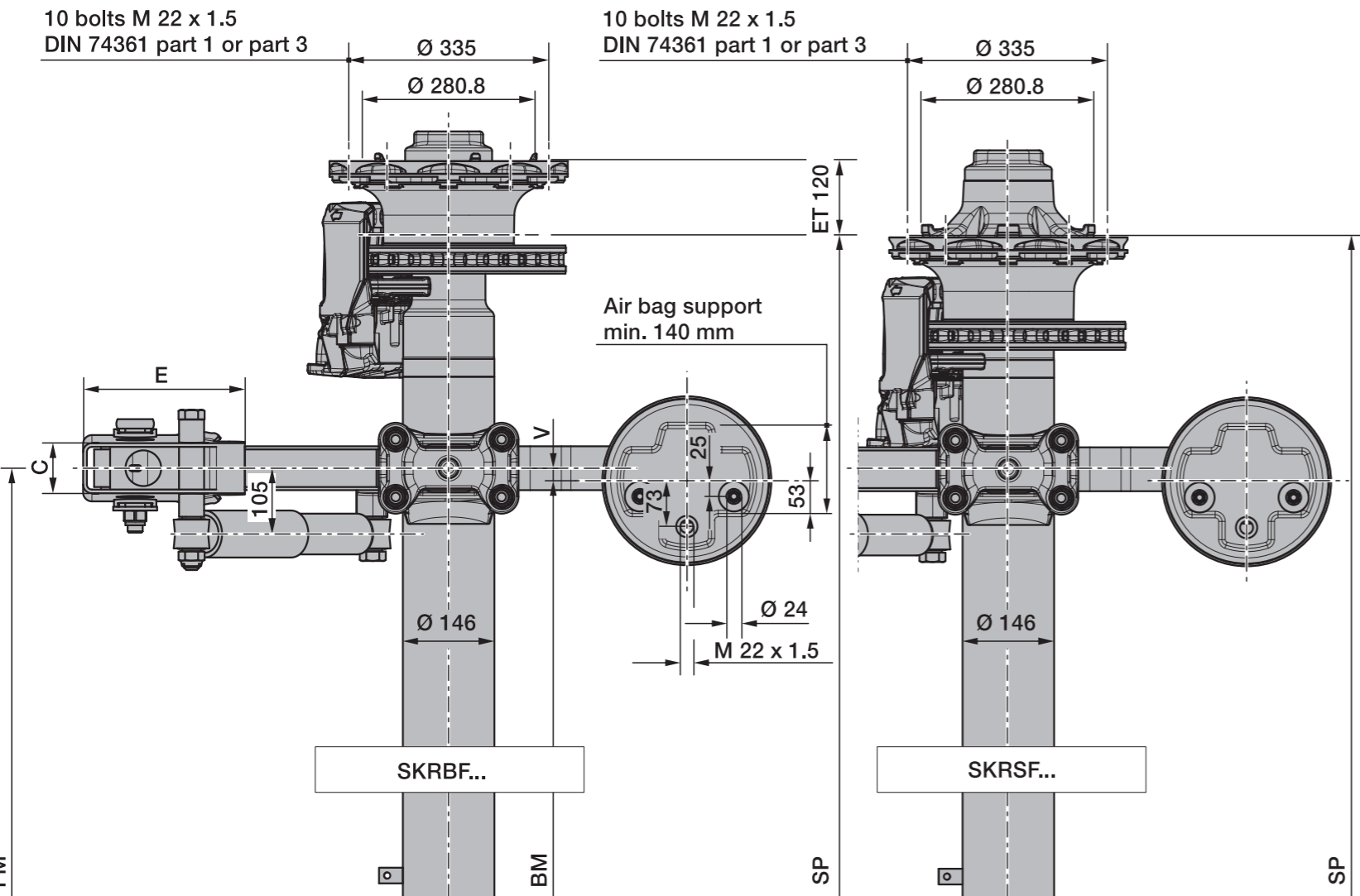
Observations:

- Deviations from the required equipment features may impact the extent and validity of the ECO Plus guarantee. Your BPW contact person is available for further information and a one-to-one consultation.
- The data sheets of the BPW air suspension must be observed for the exact specification of the air spring modules according to the application areas and the possible combinatorial function of the components mentioned (incl. TE-3075.0).
- Disc cover plate for disc brakes
 On-road: General, no cover plate is necessary for on-road use.
 Rugged conditions: Cover plates are recommended for use in rugged conditions. Rugged conditions are the off-road use as well as difficult on-road conditions (e.g. high amounts of dirt, ice or snow).
- From an axle load of 10 t, the use of Ø 360 mm air bags is mandatory.



Line	Series	Adjustable ride height FH					Total spring travel GF ¹⁾	Air bag type BPW	Shock absorber 02.37...	Hanger bracket				Shock absorber mounting		Packer ²⁾ B	Brake position α
		for single axles	for axle units	min. FH with axle raised	empty without air	loaded without air				ST	C	E	G	D	F		
1 ³⁾	ALO ⁶⁾	390 - 430	400 - 430	430	330	315	190	30K	...22.83.02	184	86	240	83	70	35	---	20°
2	ALO ⁶⁾	420 - 470	430 - 470	460	360	345	190	30K	...22.83.02	268	80	258	83	90	35	---	20°
3	ALO ⁶⁾	450 - 510	460 - 510	490	390	375	220	30	...22.88.02	268	80	258	83	90	35	---	20°
4	ALO ⁶⁾	500 - 565	510 - 565	540	440	425	220	30	...22.88.02	350	100	300	100	100	150	40	20°

¹⁾ Lifting heights acc. to TD1242.0
²⁾ The packer is not included in supplied package.
³⁾ Only suitable for semi-trailers/Centre axle drawbar trailer
⁶⁾ LightTube possible

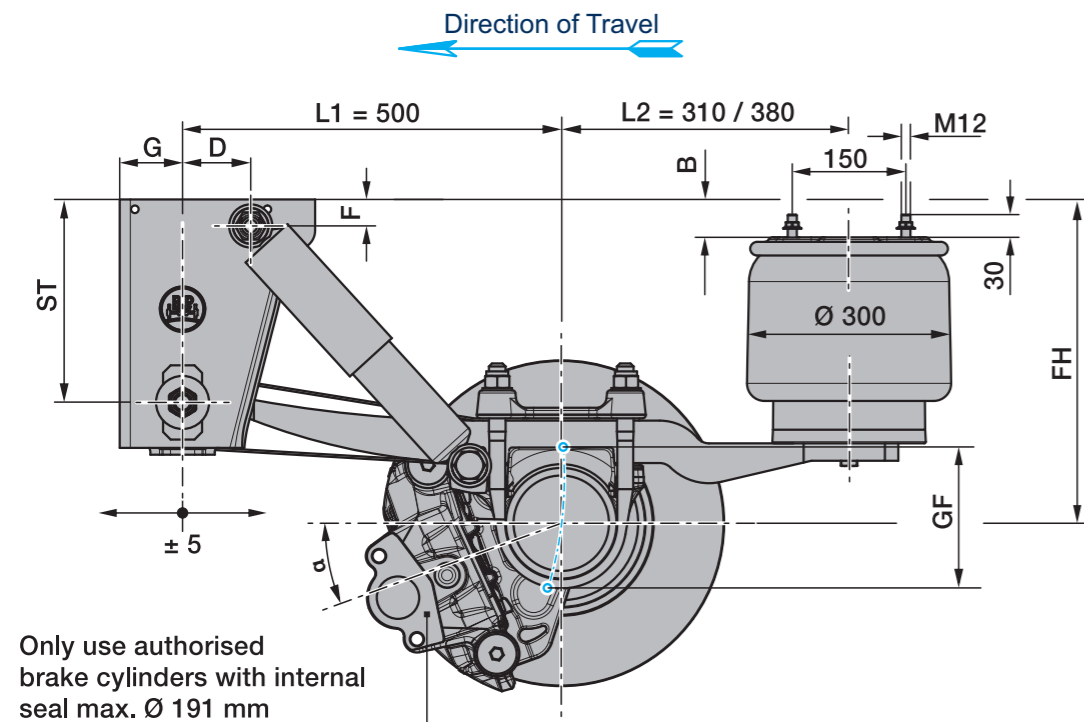


Axle type	Track SP	Spring centre FM	Air bag centre BM		Tyres recommended
			V = 20	V = 60	
SKRBF... 9010	2040	1200 ⁶⁾	1160	1080	385/65 R22.5
		1300 ⁶⁾	1260	1180	385/55 R22.5
	2095	1300 ⁶⁾	1260	1180	385/65 R19.5 ⁴⁾
SKRSF... 9010	2040	1200 ⁶⁾	1160	1080	435/50 R19.5 ⁵⁾
		1300 ⁶⁾	1260	1180	445/45 R19.5 ⁵⁾
	2100	1200 ⁶⁾	1160	1080	385/65 R22.5
		1300 ⁶⁾	1260	1180	385/55 R22.5
2140	1400 ⁶⁾	1360	1280		

⁴⁾ The loading rating of the tyre mentioned in the drawing is in no relation to the axle load capacity. It is dependent on the information from the tyre manufacturer.
⁵⁾ Note the maximum total width.
⁶⁾ LightTube possible

- > Max. inclination angle of the semitrailer under full load and lowest adjustable ride height $\pm 1^\circ$
- > With trailing arm L1 = 500 / L2 = 310, bag pressures acc. to TE1188.0 sheet 18
With trailing arm L1 = 500 / L2 = 380, bag pressures acc. to TE1188.0 sheet 15
- > The hanger brackets, air bag supports and the frame must be reinforced so that the forces applied can be absorbed (see the current BPW installation instructions).

Rev. 1	(3)	01.06.2021
Subject to change without notice.		



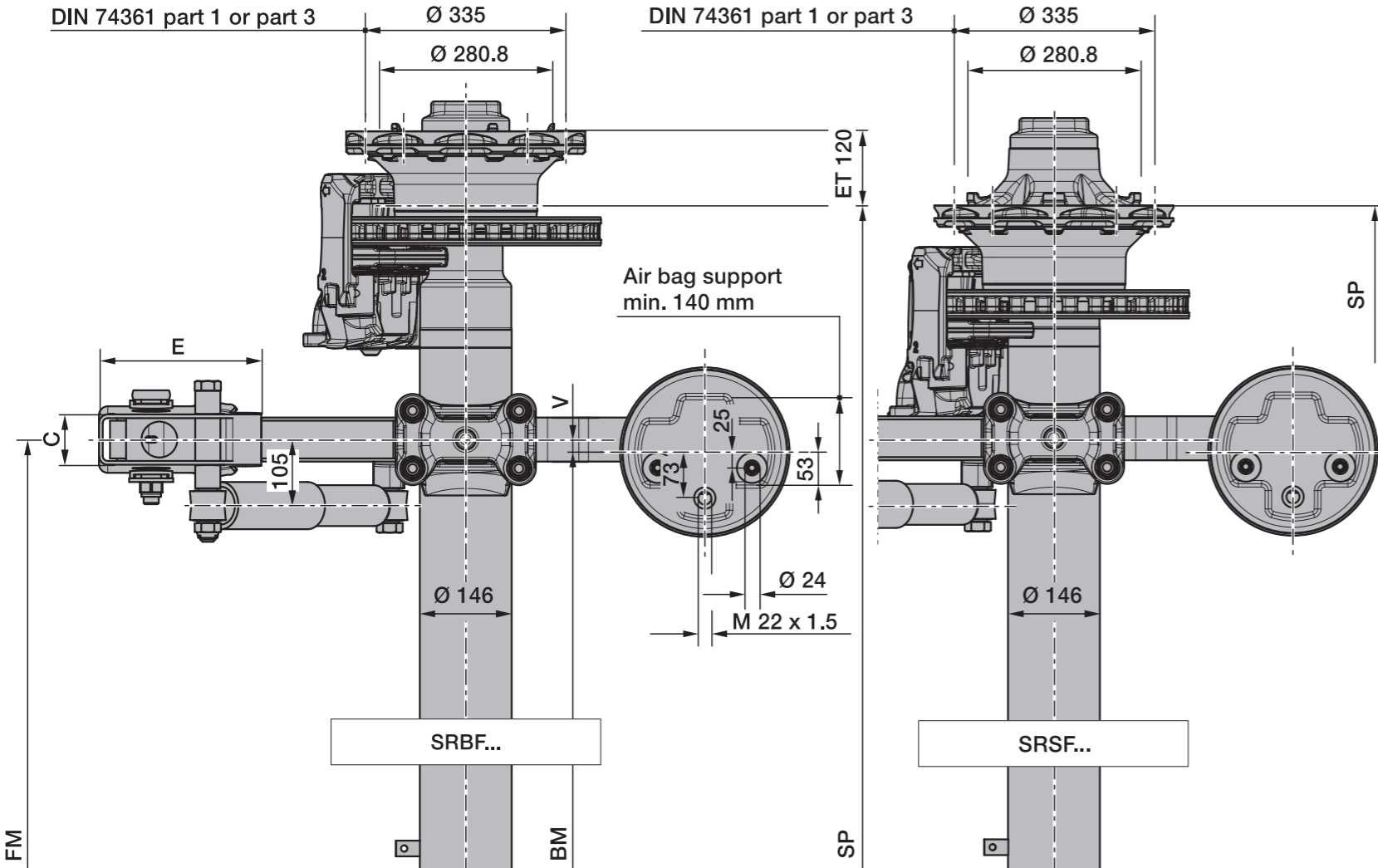
Only use authorised
brake cylinders with internal
seal max. Ø 191 mm

Line	Series	Adjustable ride height FH					Total spring travel GF ¹⁾	Air bag type BPW	Shock absorber 02.37...	Hanger bracket				Shock absorber mounting		Packer ²⁾ B	Brake position α
		for single axles	for axle units	min. FH with axle raised	empty without air	loaded without air				ST	C	E	G	D	F		
1 ³⁾	ALO ⁴⁾	390 - 430	400 - 430	430	330	315	190	30K	...22.83.02	184	86	240	83	70	35	---	20°
2	ALO ⁴⁾	420 - 470	430 - 470	460	360	345	190	30K	...22.83.02	268	80	258	83	90	35	---	20°
3	ALO ⁴⁾	450 - 510	460 - 510	490	390	375	220	30	...22.88.02	268	80	258	83	90	35	---	20°
4	ALO ⁴⁾	500 - 565	510 - 565	540	440	425	220	30	...22.88.02	350	100	300	100	100	150	40	20°

1) Lifting heights acc. to TD1242.0
2) The packer is not included in supplied package.
3) Only suitable for semi-trailers/Centre axle drawbar trailer
4) LightTube possible

10 bolts M 22 x 1.5
DIN 74361 part 1 or part 3

10 bolts M 22 x 1.5
DIN 74361 part 1 or part 3

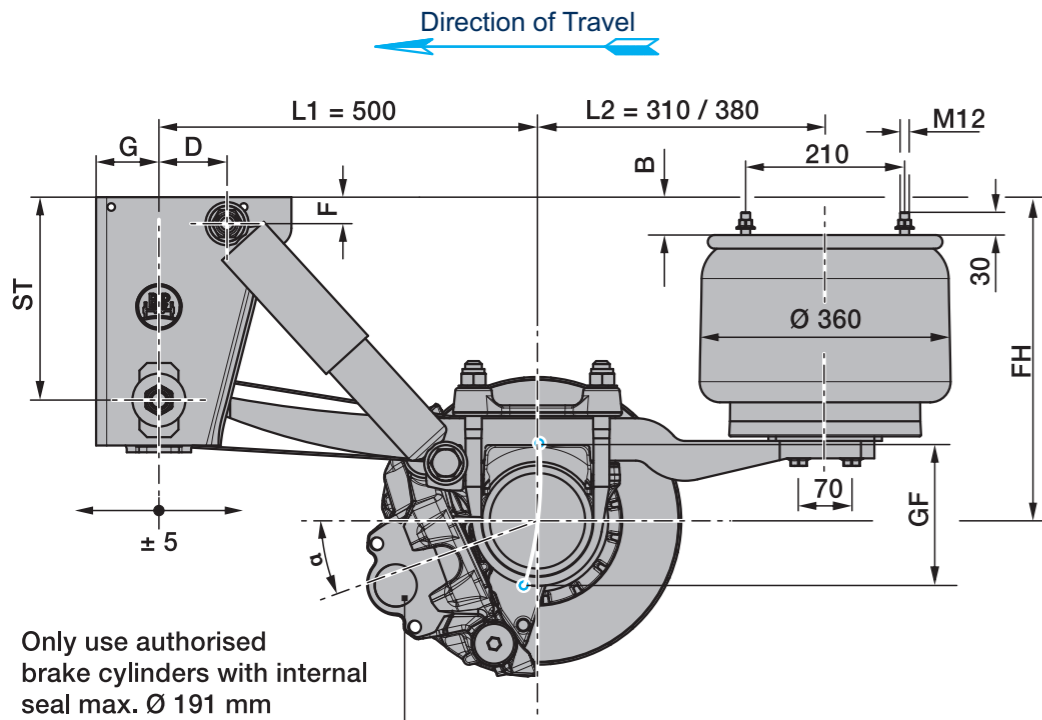


Axle type	Track SP	Spring centre FM	Air bag centre BM		Tyres recommended
			V = 20	V = 60	
SRBF... 9010	2040	1200 ⁴⁾	1160	1080	385/65 R22.5
			1260	1180	
	2095	1300 ⁴⁾	1260	1180	385/55 R22.5
SRSF... 9010	2040	1200 ⁴⁾	1160	1080	385/65 R22.5
			1260	1180	
	2100	1300 ⁴⁾	1260	1180	385/55 R22.5
	2140	1400 ⁴⁾	1360	1280	

⁴⁾ LightTube possible

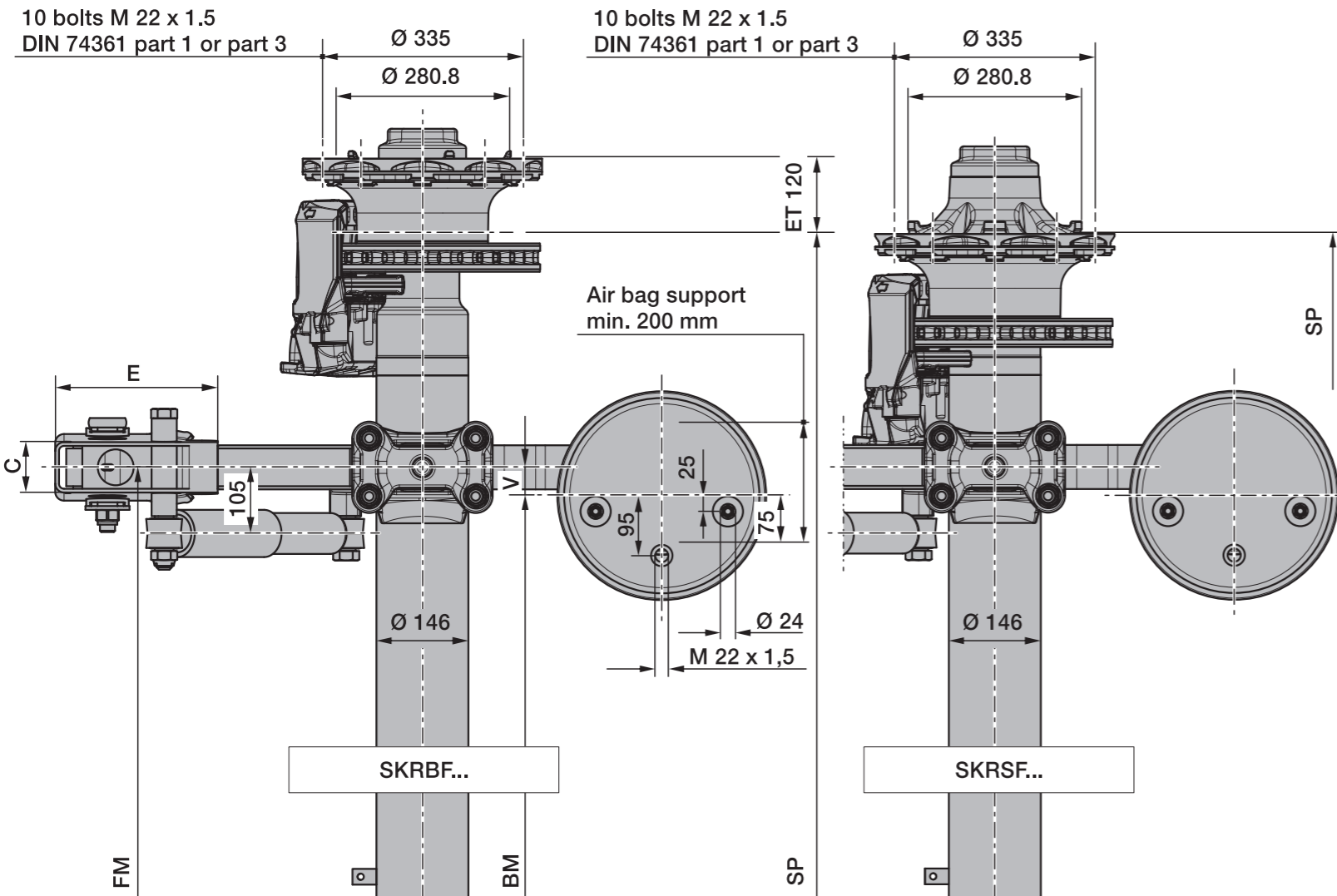
- Max. inclination angle of the semitrailer under full load and lowest adjustable ride height ±1°
- With trailing arm L1 = 500 / L2 = 310, bag pressures acc. to TE1188.0 sheet 18
With trailing arm L1 = 500 / L2 = 380, bag pressures acc. to TE1188.0 sheet 15
- The hanger brackets, air bag supports and the frame must be reinforced so that the forces applied can be absorbed (see the current BPW installation instructions).

Rev. 1 (3) 01.06.2021
Subject to change without notice.



Line	Series	Adjustable ride height FH					Total spring travel GF ¹⁾	Air bag type BPW	Shock absorber 02.37...	Hanger bracket				Shock absorber mounting		Packer ²⁾ B	Brake position α
		for single axles	for axle units	min. FH with axle raised	empty without air	loaded without air				ST	C	E	G	D	F		
1 ³⁾	ALO ⁶⁾	390 - 430	400 - 430	430	330	315	190	36K	...22.83.02	184	86	240	83	70	35	---	20°
2	ALO ⁶⁾	420 - 470	430 - 470	460	360	345	190	36K	...22.83.02	268	80	258	83	90	35	---	20°
3	ALO ⁶⁾	450 - 510	460 - 510	490	390	375	220	36	...22.88.02	268	80	258	83	90	35	---	20°
4	ALO ⁶⁾	500 - 565	510 - 565	540	440	425	220	36	...22.88.02	350	100	300	100	100	150	40	20°

¹⁾ Lifting heights acc. to TD1242.0
²⁾ The packer is not included in supplied package.
³⁾ Only suitable for semi-trailers/Centre axle drawbar trailer
⁶⁾ LightTube possible

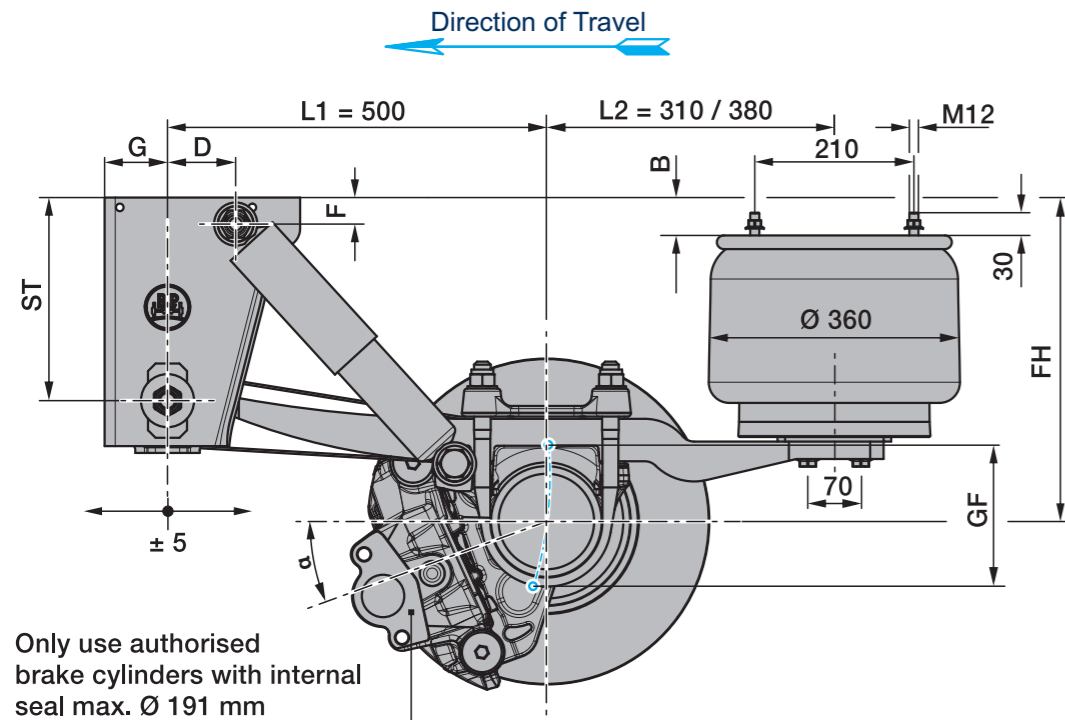


Axle type	Track SP	Spring centre FM	Air bag centre BM	Tyres recommended
			V = 80	
SKRBF... 9010	2040	1200 ⁶⁾	1040	385/65 R22.5
			1140	385/55 R22.5
	2095	1300 ⁶⁾	1140	385/65 R19.5 ⁴⁾
SKRSF... 9010	2040	1200 ⁶⁾	1040	385/65 R22.5
			1140	385/55 R22.5
	2100	1300 ⁶⁾	1140	
	2140	1400 ⁶⁾	1240	

⁴⁾ The loading rating of the tyre mentioned in the drawing is in no relation to the axle load capacity. It is dependent on the information from the tyre manufacturer.
⁵⁾ Note the maximum total width.
⁶⁾ LightTube possible

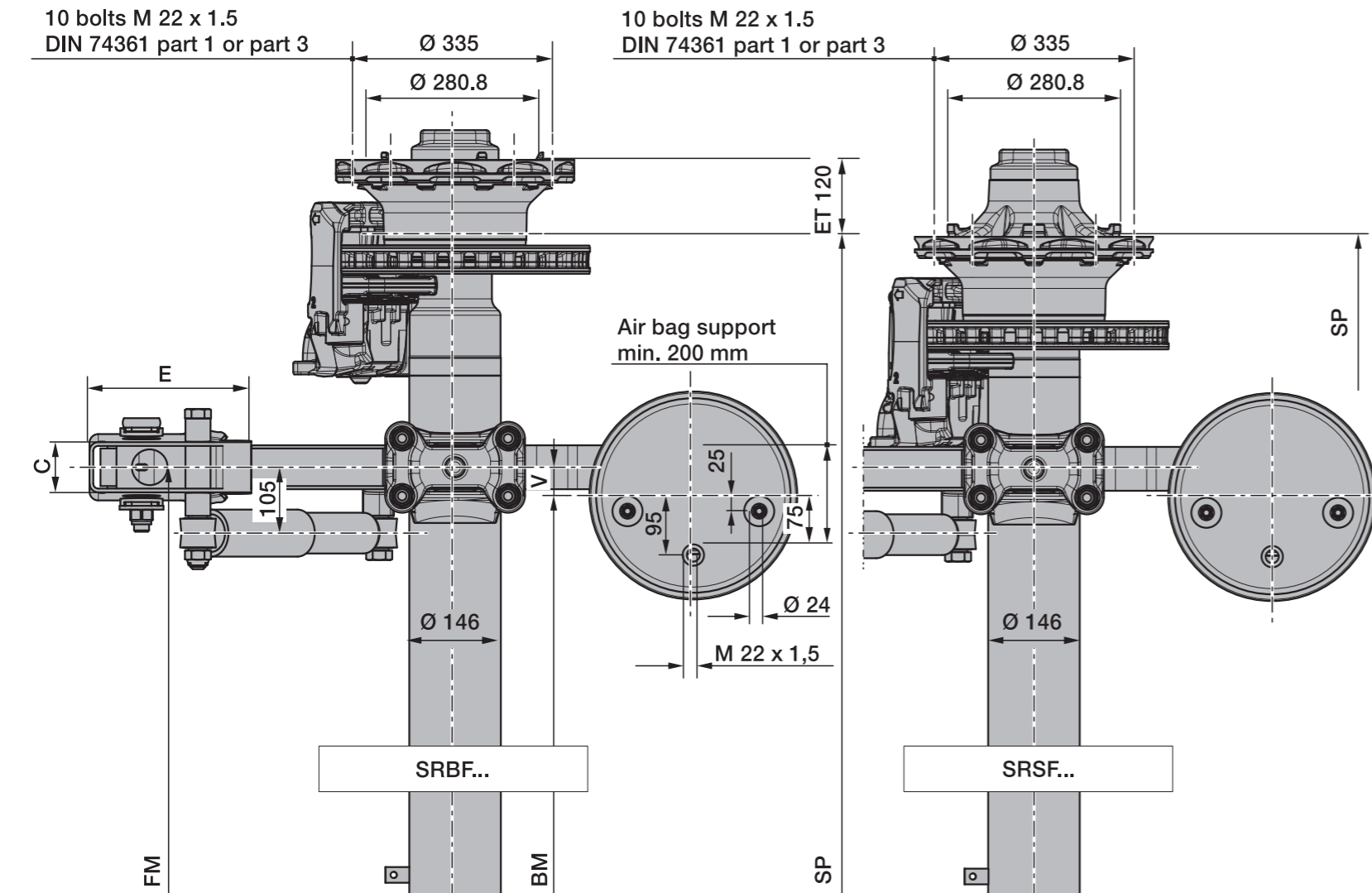
- > Max. inclination angle of the semitrailer under full load and lowest adjustable ride height $\pm 1^\circ$
- > With trailing arm L1 = 500 / L2 = 310, bag pressures acc. to TE1188.0 Sheet 5
With trailing arm L1 = 500 / L2 = 380, bag pressures acc. to TE1188.0 Sheet 11
- > The hanger brackets, air bag supports and the frame must be reinforced so that the forces applied can be absorbed (see the current BPW installation instructions).

Rev. 1 (3) 01.06.2021
Subject to change without notice.



Line	Series	Adjustable ride height FH					Total spring travel GF ¹⁾	Air bag type BPW	Shock absorber 02.37...	Hanger bracket				Shock absorber mounting		Packer ²⁾ B	Brake position α
		for single axles	for axle units	min. FH with axle raised	empty without air	loaded without air				ST	C	E	G	D	F		
1 ³⁾	ALO ⁴⁾	390 - 430	400 - 430	430	330	315	190	36K	...22.83.02	184	86	240	83	70	35	---	20°
2	ALO ⁴⁾	420 - 470	430 - 470	460	360	345	190	36K	...22.83.02	268	80	258	83	90	35	---	20°
3	ALO ⁴⁾	450 - 510	460 - 510	490	390	375	220	36	...22.88.02	268	80	258	83	90	35	---	20°
4	ALO ⁴⁾	500 - 565	510 - 565	540	440	425	220	36	...22.88.02	350	100	300	100	100	150	40	20°

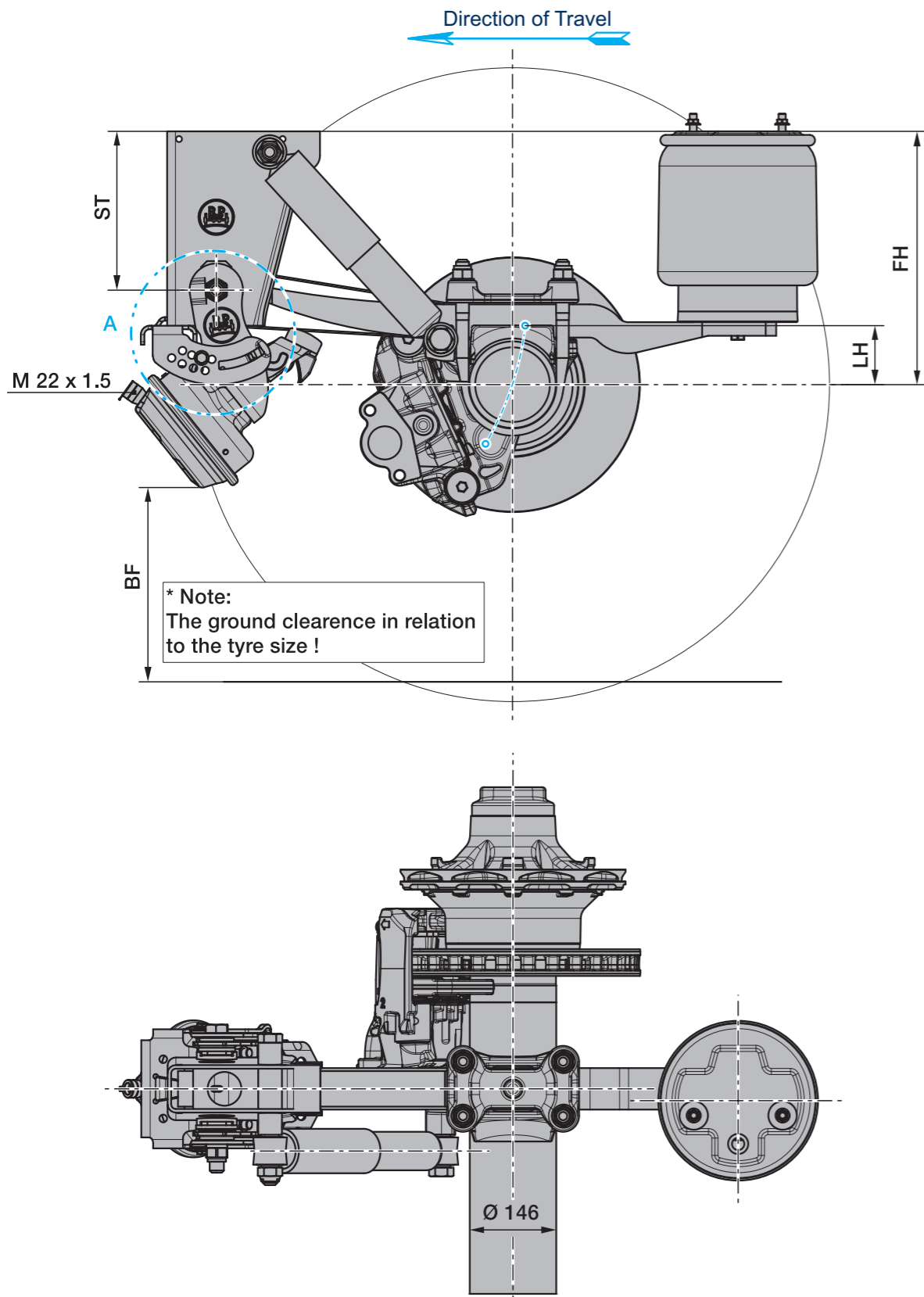
¹⁾ Lifting heights acc. to TD1242.0
²⁾ The packer is not included in supplied package.
³⁾ Only suitable for semi-trailers/Centre axle drawbar trailer
⁴⁾ LightTube possible



Axle type	Track SP	Spring centre FM	Air bag centre BM	Tyres recommended
			V = 80	
SRBF... 9010	2040	1200 ⁴⁾	1040	385/65 R22.5 385/55 R22.5
	2040	1300 ⁴⁾	1140	
	2095	1300 ⁴⁾	1140	
	2140	1400 ⁴⁾	1240	
SRSF... 9010	2040	1200 ⁴⁾	1040	385/65 R22.5 385/55 R22.5
	2040	1300 ⁴⁾	1140	
	2100	1300 ⁴⁾	1140	
	2140	1400 ⁴⁾	1240	

⁴⁾ LightTube possible

- Max. inclination angle of the semitrailer under full load and lowest adjustable ride height $\pm 1^\circ$
- With trailing arm L1 = 500 / L2 = 310, bag pressures acc. to TE1188.0 Sheet 5
With trailing arm L1 = 500 / L2 = 380, bag pressures acc. to TE1188.0 Sheet 11
- The hanger brackets, air bag supports and the frame must be reinforced so that the forces applied can be absorbed (see the current BPW installation instructions).



Suspensions to drawing	Adjustable ride height FH		min. lifting stroke LH	Hanger bracket height ST	Ground clearance BF ¹⁾	Position lift stop no.	BPW no. 05.828...	
	for axle units	min. FH with axle raised					Hanger bracket ³⁾	Channel cross member
Sheet 1 + 1a	400 - 430	430	100	184	419	8	...31.81.0	...31.82.0
	430 - 470	460	100	268	358	7		
Sheet 2 + 2a	460 - 510	490	100	268	395	8	...32.12.0	---
	510 - 565	540	100	350	361	4		

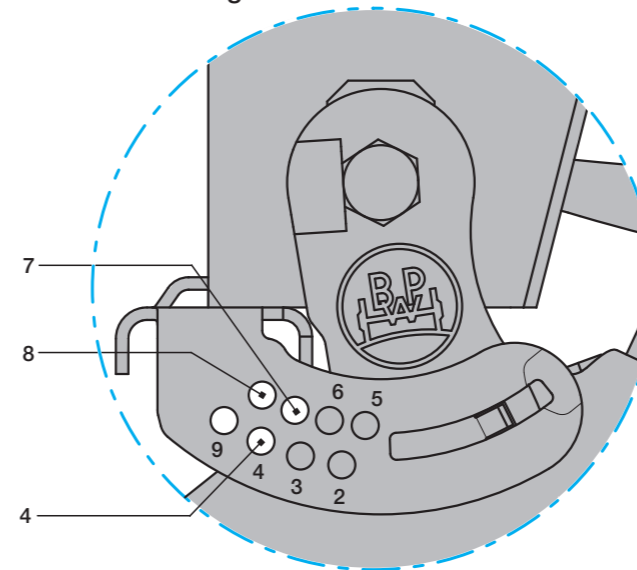
¹⁾ Ground clearance in relation to the set minimum ride height with the axle raised.

* Tyre Tyre: 385/65 R 22.5 (r_{stat} = 496)

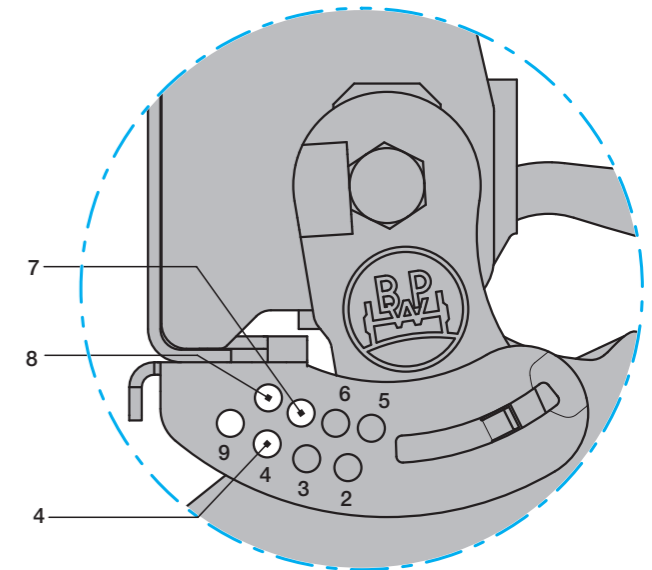
In the case of smaller tyres, it is necessary to check whether the doublesided axle lift can be used, according to the application.

³⁾ Lifting device for bolt-on bracket on demand.

Detail A
Version with hanger bracket

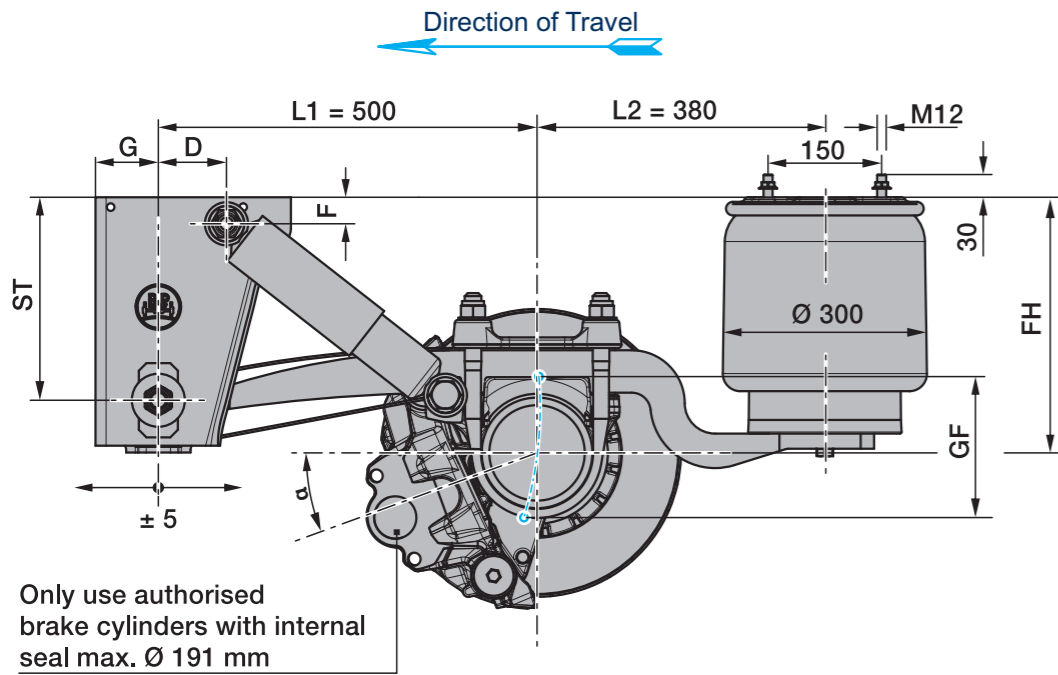


Detail A
Version with channel cross member



- > In the lifting and lowering version, the total spring travel must be limited by a shutoff valve.
- > Minimum air pressure for lifting the axle approx. 6 bar.
- > The hanger brackets, air bag supports and the frame must be reinforced so that the forces applied can be absorbed (see the current BPW installation instructions).

Rev. 1	(3)	01.06.2021
Subject to change without notice.		

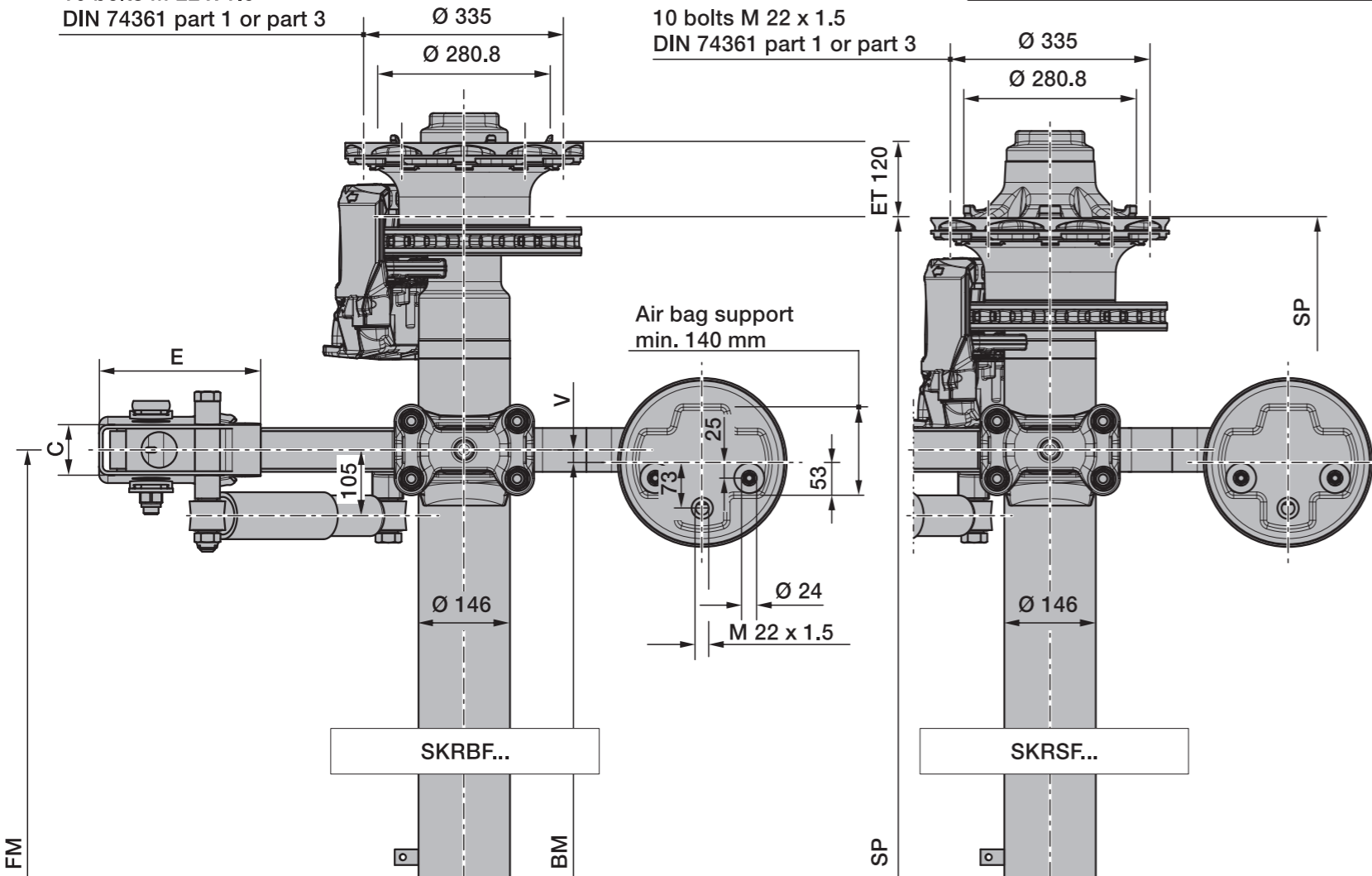


Line	Series	Adjustable ride height FH					Total spring travel GF ¹⁾	Air bag type BPW	Shock absorber 02.37...	Hanger bracket				Shock absorber mounting		Brake position α
		for single axles	for axle units	min. FH with axle raised	empty without air	loaded without air				ST	C	E	G	D	F	
1 ²⁾	ALMT	245 - 290	255 - 290	285	185	170	190	30K	...22.89.02	184	86	240	83	70	35	20°
2 ²⁾	ALMT	270 - 310	280 - 310	310	210	195	220	30	...22.89.02	184	86	240	83	70	35	20°
3	ALMT	280 - 325	290 - 325	320	220	205	190	30K	...22.83.02	268	80	258	83	55	35	20°
4 ²⁾	ALM ⁵⁾	300 - 340	310 - 340	340	240	225	190	30K	...22.83.02	184	86	240	83	70	35	20°
5	ALMT	305 - 360	315 - 360	345	245	230	220	30	...22.83.02	268	80	258	83	55	35	20°
6	ALM ⁵⁾	340 - 390	350 - 390	380	280	265	190	30K	...22.83.02	268	80	258	83	90	35	20°
7	ALM ⁵⁾	365 - 420	375 - 420	405	305	290	220	30	...22.83.02	268	80	258	83	90	35	20°

¹⁾ Lifting heights acc. to TD1242.0
²⁾ Only suitable for semi-trailers/Centre axle drawbar trailer
⁵⁾ LightTube possible

10 bolts M 22 x 1.5
DIN 74361 part 1 or part 3

10 bolts M 22 x 1.5
DIN 74361 part 1 or part 3

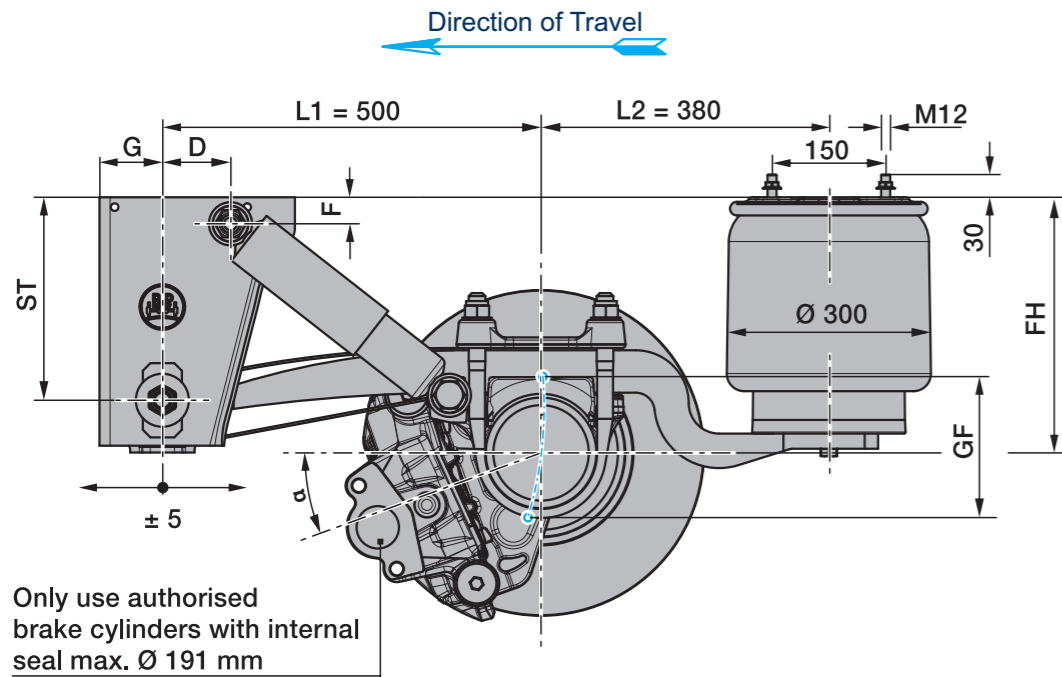


Axle type	Track SP	Spring centre FM	Air bag centre BM		Tyres recommended
			V = 20	V = 60	
SKRBF... 9010	2040	1200 ⁵⁾	1160	1080	385/65 R22.5
		1300 ⁵⁾	1260	1180	385/55 R22.5
	2095	1300 ⁵⁾	1260	1180	385/65 R19.5 ³⁾
SKRSF... 9010	2040	1200 ⁵⁾	1160	1080	435/50 R19.5 ⁴⁾
		1300 ⁵⁾	1260	1180	445/45 R19.5 ⁴⁾
	2100	1300 ⁵⁾	1260	1180	385/65 R22.5
	2140	1400 ⁵⁾	1360	1280	385/55 R22.5

³⁾ The loading rating of the tyre mentioned in the drawing is in no relation to the axle load capacity. It is dependent on the information from the tyre manufacturer.
⁴⁾ Note the maximum total width.
⁵⁾ LightTube possible

- > Max. inclination angle of the semitrailer under full load and lowest adjustable ride height $\pm 1^\circ$
- > With trailing arm L1 = 500 / L2 = 380, bag pressures acc. to TE1188.0 sheet 15
- > The hanger brackets, air bag supports and the frame must be reinforced so that the forces applied can be absorbed (see the current BPW installation instructions).

Rev. 1 (3) 01.06.2021
Subject to change without notice.

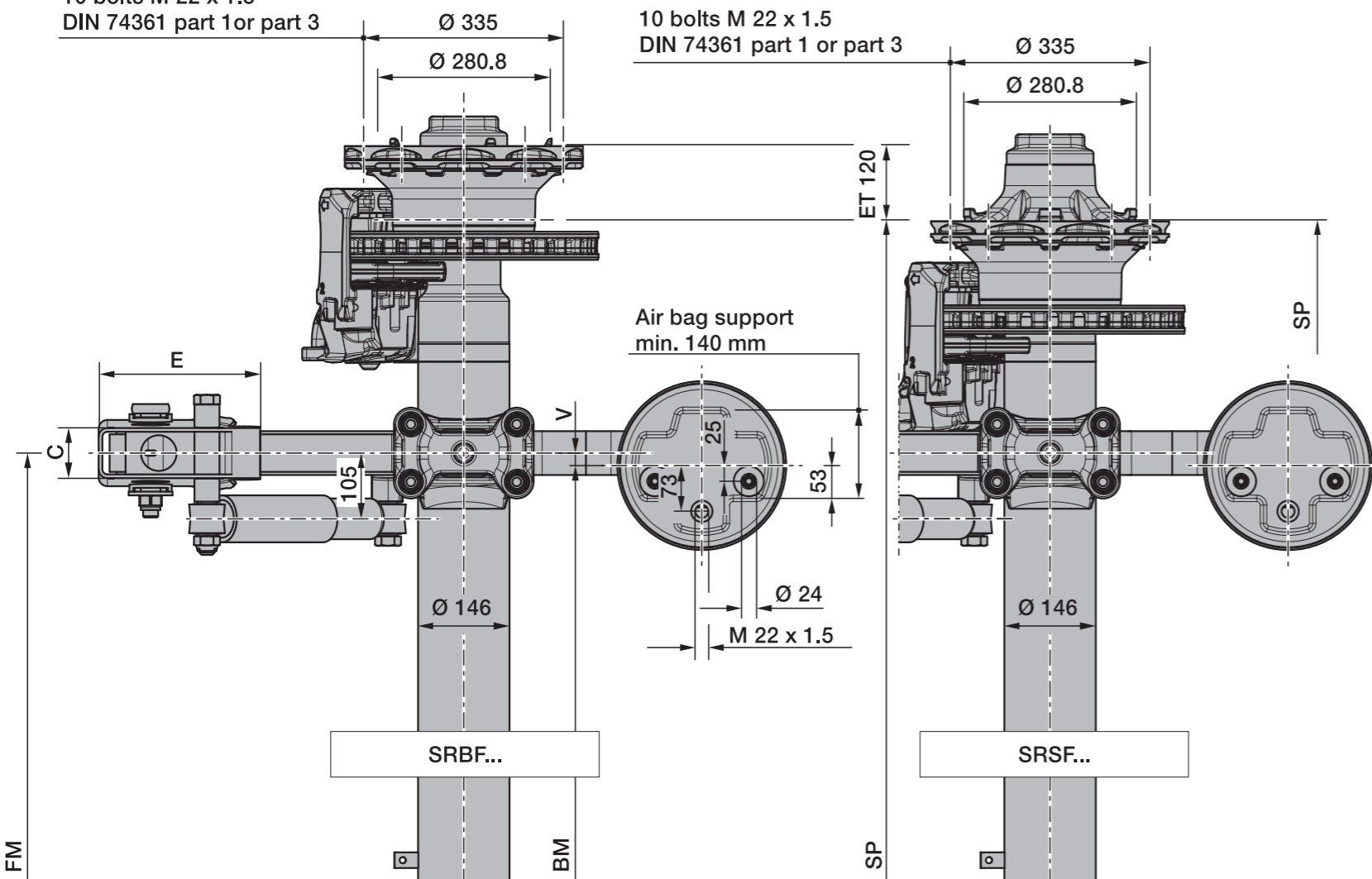


Line	Series	Adjustable ride height FH					Total spring travel GF ¹⁾	Air bag type BPW	Shock absorber 02.37...	Hanger bracket				Shock absorber mounting		Brake position α
		for single axles	for axle units	min. FH with axle raised	empty without air	loaded without air				ST	C	E	G	D	F	
1 ²⁾	ALMT	245 - 290	255 - 290	285	185	170	190	30K	...22.89.02	184	86	240	83	70	35	20°
2 ²⁾	ALMT	270 - 310	280 - 310	310	210	195	220	30	...22.89.02	184	86	240	83	70	35	20°
3	ALMT	280 - 325	290 - 325	320	220	205	190	30K	...22.83.02	268	80	258	83	55	35	20°
4 ²⁾	ALM ³⁾	300 - 340	310 - 340	340	240	225	190	30K	...22.83.02	184	86	240	83	70	35	20°
5	ALMT	305 - 360	315 - 360	345	245	230	220	30	...22.83.02	268	80	258	83	55	35	20°
6	ALM ³⁾	340 - 390	350 - 390	380	280	265	190	30K	...22.83.02	268	80	258	83	90	35	20°
7	ALM ³⁾	365 - 420	375 - 420	405	305	290	220	30	...22.83.02	268	80	258	83	90	35	20°

¹⁾ Lifting heights acc. to TD1242.0
²⁾ Only suitable for semi-trailers/Centre axle drawbar trailer
³⁾ LightTube possible

10 bolts M 22 x 1.5
DIN 74361 part 1 or part 3

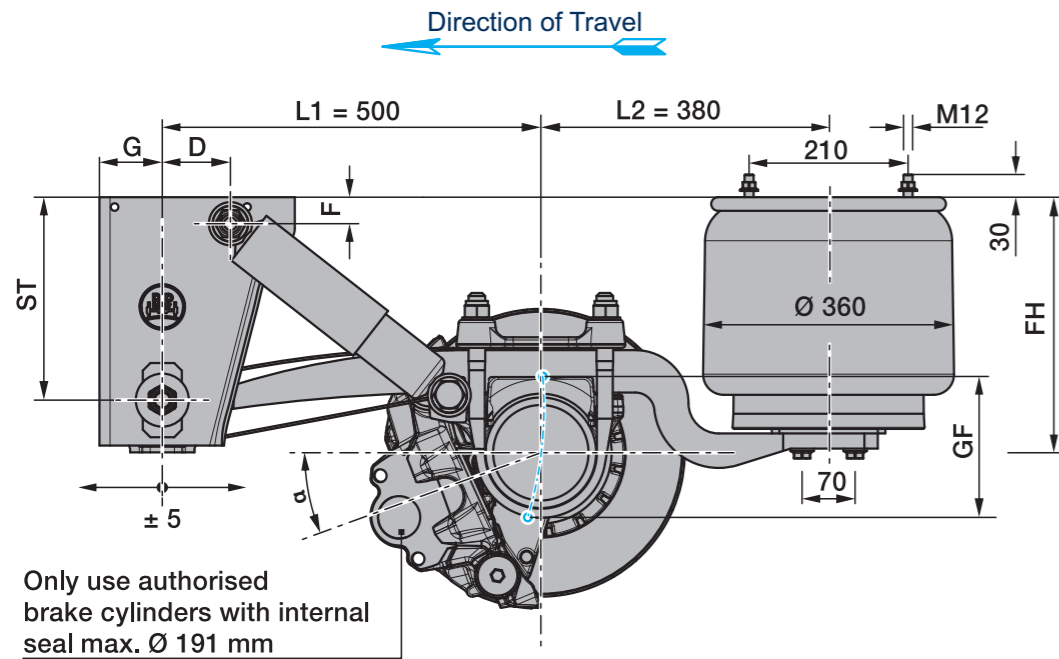
10 bolts M 22 x 1.5
DIN 74361 part 1 or part 3



Axle type	Track SP	Spring centre FM	Air bag centre BM		Tyres recommended
			V = 20	V = 60	
SRBF... 9010	2040	1200 ³⁾	1160	1080	385/65 R22.5 385/55 R22.5
		1300 ³⁾	1260	1180	
	2095	1300 ³⁾	1260	1180	
SRSF... 9010	2040	1200 ³⁾	1160	1080	385/65 R22.5 385/55 R22.5
		1300 ³⁾	1260	1180	
	2100	1300 ³⁾	1260	1180	
	2140	1400 ³⁾	1360	1280	

³⁾ LightTube possible

- > Max. inclination angle of the semitrailer under full load and lowest adjustable ride height ±1°
- > With trailing arm L1 = 500 / L2 = 380, bag pressures acc. to TE1188.0 sheet 15
- > The hanger brackets, air bag supports and the frame must be reinforced so that the forces applied can be absorbed (see the current BPW installation instructions).

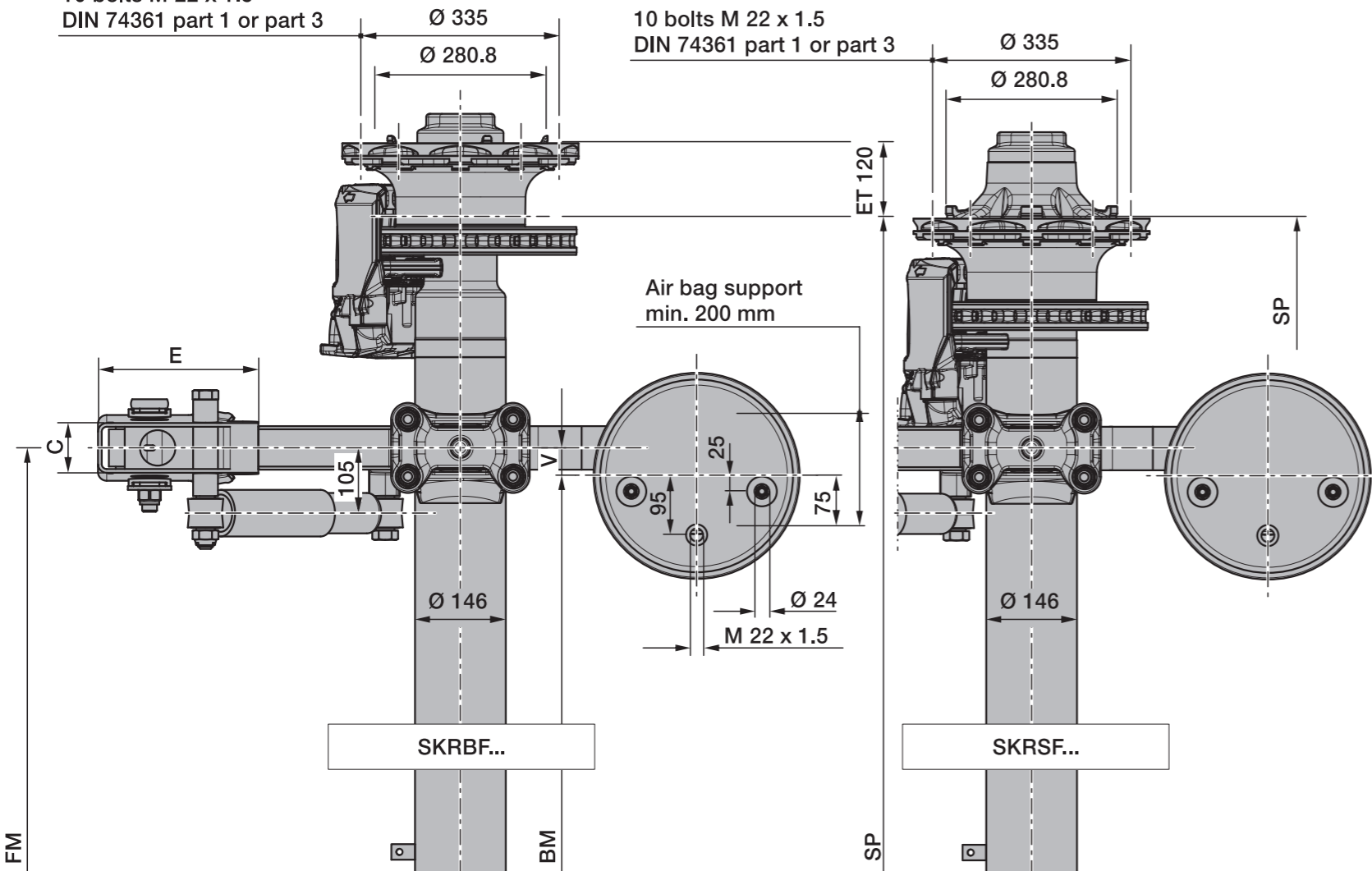


Line	Series	Adjustable ride height FH					Total spring travel GF ¹⁾	Air bag type BPW	Shock absorber 02.37...	Hanger bracket				Shock absorber mounting		Brake position α
		for single axles	for axle units	min. FH with axle raised	empty without air	loaded without air				ST	C	E	G	D	F	
1 ²⁾	ALMT	245 - 290	255 - 290	285	185	170	190	36K	...22.89.02	184	86	240	83	70	35	20°
2 ²⁾	ALMT	270 - 310	280 - 310	310	210	195	220	36	...22.89.02	184	86	240	83	70	35	20°
3	ALMT	280 - 325	290 - 325	320	220	205	190	36K	...22.83.02	268	80	258	83	55	35	20°
4 ²⁾	ALM	300 - 340	310 - 340	340	240	225	190	36K	...22.83.02	184	86	240	83	70	35	20°
5	ALMT	305 - 360	315 - 360	345	245	230	220	36	...22.83.02	268	80	258	83	55	35	20°
6	ALM	340 - 390	350 - 390	380	280	265	190	36K	...22.83.02	268	80	258	83	90	35	20°
7	ALM	365 - 420	375 - 420	405	305	290	220	36	...22.83.02	268	80	258	83	90	35	20°

¹⁾ Lifting heights acc. to TD1242.0
²⁾ Only suitable for semi-trailers/Centre axle drawbar trailer

10 bolts M 22 x 1.5
DIN 74361 part 1 or part 3

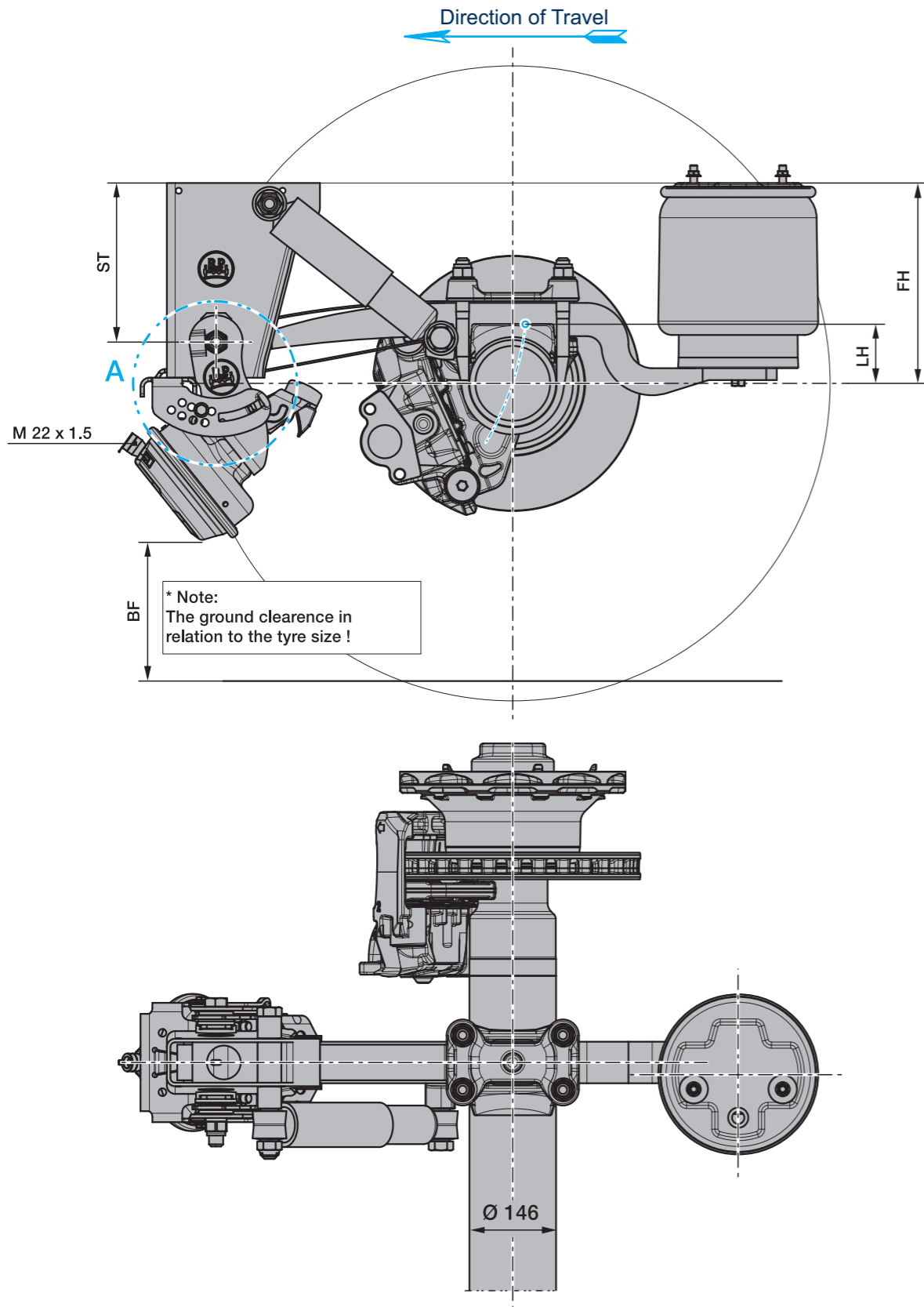
10 bolts M 22 x 1.5
DIN 74361 part 1 or part 3



Axle type	Track SP	Spring centre FM	Air bag centre BM	Tyres recommended
			V = 80	
SKRBF... 9010	2040	1200	1040	385/65 R22.5
			1140	385/55 R22.5
	2095	1300	1140	385/65 R19.5 ³⁾
SKRSF... 9010	2040	1200	1040	435/50 R19.5 ⁴⁾
			1140	445/45 R19.5 ⁴⁾
	2100	1300	1140	385/65 R22.5
2140	1400	1240	385/55 R22.5	

³⁾ The loading rating of the tyre mentioned in the drawing is in no relation to the axle load capacity. It is dependent on the information from the tyre manufacturer.
⁴⁾ Note the maximum total width.

- > Max. inclination angle of the semitrailer under full load and lowest adjustable ride height ±1°
- > With trailing arm L1 = 500 / L2 = 380, bag pressures acc. to TE1188.0 Sheet 11
- > The hanger brackets, air bag supports and the frame must be reinforced so that the forces applied can be absorbed (see the current BPW installation instructions).



Suspensions to drawing	Adjustable ride height FH		min. lifting stroke LH	Hanger bracket height ST	Ground clearance BF ¹⁾	Position lift stop no.	BPW no. 05.828...	
	for axle units	min. FH with axle raised					Hanger bracket ³⁾	Channel cross member
Sheet 8 + 8a Sheet 9 + 9a	255 - 290	285	100	184	262	5	...31.81.0	...31.82.0
	280 - 310	310	100	184	287	6		
	290 - 325	320	100	268	213	5		
	310 - 340	340	100	184	316	6		
	315 - 360	345	100	268	238	5		
	350 - 390	380	100	268	271	2		
375 - 420	405	100	268	297	6			

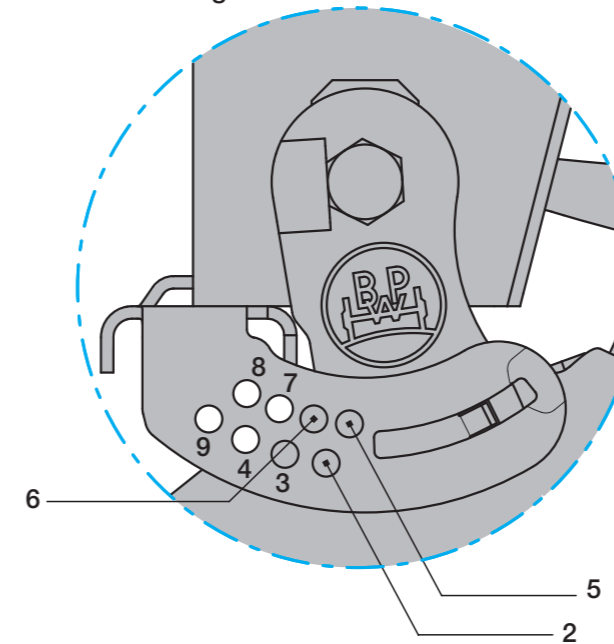
¹⁾ Ground clearance in relation to the set minimum ride height with the axle raised.

* Tyre: 385/65 R 22.5 (r_{stat} = 496)

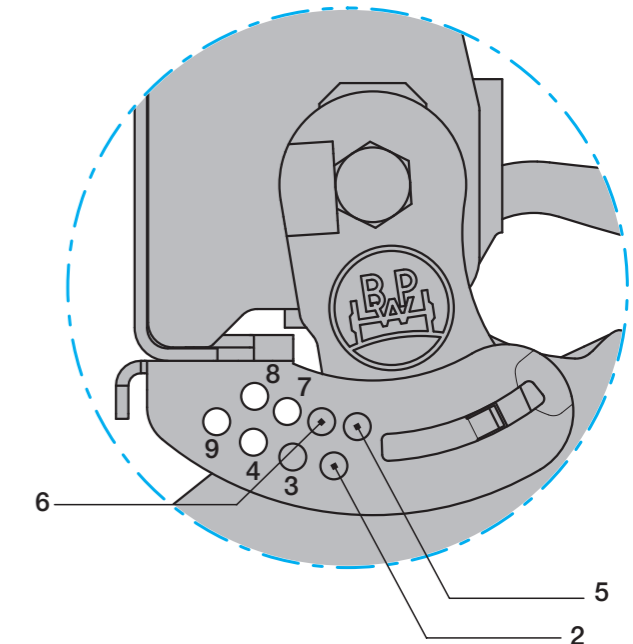
In the case of smaller tyres, it is necessary to check whether the doublesided axle lift can be used, according to the application.

³⁾ Lifting device for bolt-on bracket on demand.

Detail A
Version with hanger bracket



Detail A
Version with channel cross member



- > In the lifting and lowering version, the total spring travel must be limited by a shutoff valve.
- > Minimum air pressure for lifting the axle approx. 6 bar.
- > The hanger brackets, air bag supports and the frame must be reinforced so that the forces applied can be absorbed (see the current BPW installation instructions).

Rev. 1 (3) 01.06.2021
Subject to change without notice.